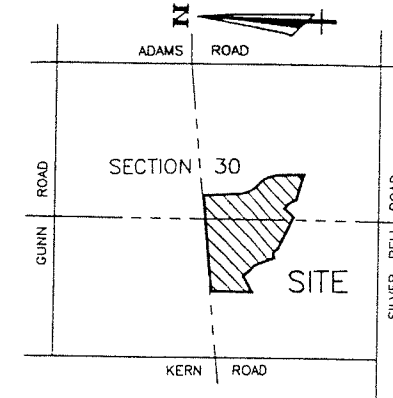


COUNTRY CREEK SUBDIVISION NO. 3

A PART OF THE NE., SE. & SW. 1/4 OF SEC. 30, T-4-N, R-11-E,
OAKLAND TOWNSHIP, OAKLAND COUNTY, MICHIGAN

LIBER 259 PAGE 18
SHEET 1 OF 8 SHEETS



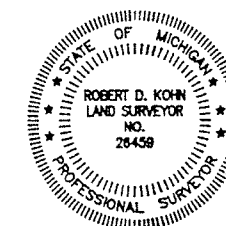
LOCATION MAP

SCALE 1" = 2000'

LEGEND

1. ALL DIMENSIONS ARE GIVEN IN FEET.
2. CURVILINEAR MEASUREMENTS ARE ARC DISTANCES.
3. CONCRETE MONUMENTS HAVE BEEN PLACED AT ALL POINTS MARKED "O".
4. CONCRETE MONUMENTS ARE STEEL BARS ONE-HALF (1/2) INCH IN DIAMETER AND THIRTY SIX (36) INCHES IN LENGTH, ENCASED IN A CONCRETE CYLINDER FOUR (4) INCHES IN DIAMETER, AND THIRTY SIX (36) INCHES IN LENGTH.
5. LOT CORNERS HAVE BEEN MARKED WITH STEEL BARS ONE-HALF (1/2) INCH IN DIAMETER, AND EIGHTEEN (18) INCHES IN LENGTH.
6. (R) INDICATES A RADIAL LINE.
7. (NR) INDICATES A NON RADIAL LINE.
8. \perp INDICATES A RIGHT ANGLE.
9. \blacksquare DENOTES FOUND MONUMENT 1/2 INCH STEEL BAR ENCASED IN CONCRETE 4 INCHES IN DIAMETER.
10. BEARINGS FOR THIS SUBDIVISION ARE BASED UPON AN OBSERVATION OF POLARIS DATED DECEMBER 8, 1988.
11. USE OF THE WORD "PRIVATE" DOES NOT LIMIT IN ANY WAY THE SCOPE OF THE EASEMENT GRANTED TO THE NAME COUNTY DRAINAGE DISTRICT.

THIS PLAT IS SUBJECT TO RESTRICTIONS AS REQUIRED BY ACT 288 OF 1967 AS AMENDED ON CERTAIN LOTS WITH RESPECT TO THE REQUIREMENTS OF THE OAKLAND COUNTY DRAIN COMMISSIONER, WHICH ARE RECORDED IN LIBER 17408, PAGES 566-574 OF RECORDS OF THIS COUNTY.



Robert D. Kohn

Giffels-Webster Engineers Inc.

ENGINEERS - SURVEYORS - PLANNERS
2871 BOND STREET ROCHESTER HILLS MICHIGAN
(810) 852-3100

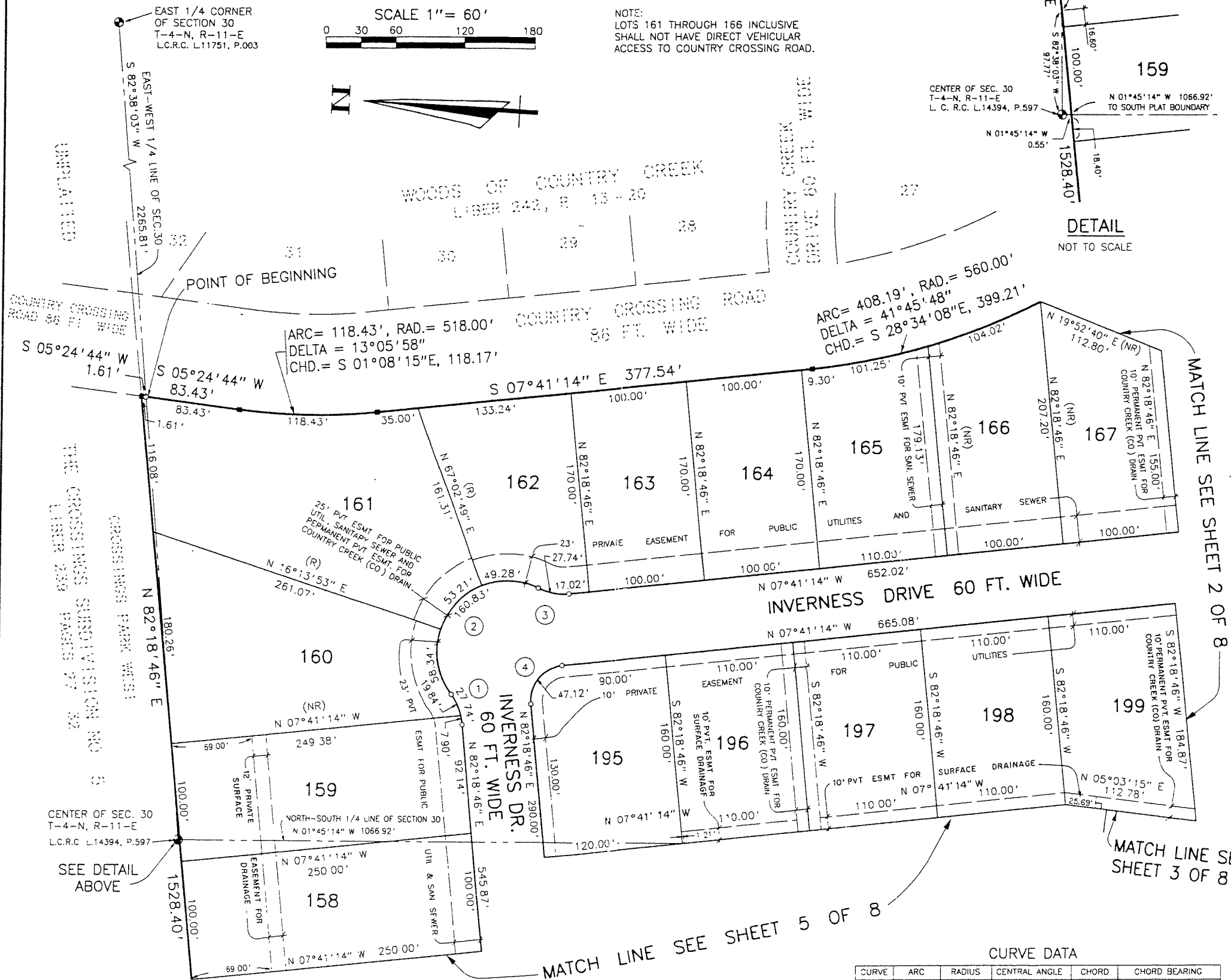
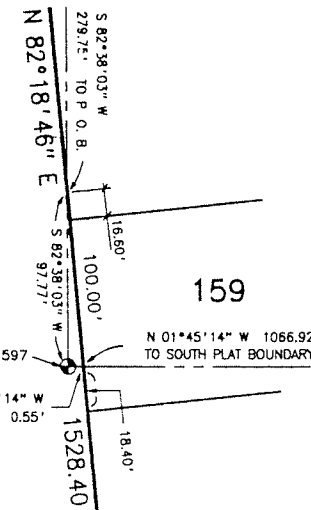
SCALE 1" = 60'



NOTE:
LOTS 161 THROUGH 166 INCLUSIVE
SHALL NOT HAVE DIRECT VEHICULAR
ACCESS TO COUNTRY CROSSING ROAD.

CENTER OF SEC. 30
T-4-N, R-11-E
L.C.R.C. L14394, P.597

DETAIL
NOT TO SCALE



CURVE DATA

CURVE	ARC	RADIUS	CENTRAL ANGLE	CHORD	CHORD BEARING
1	27.74'	50.00'	31° 47' 18"	27.39'	N 66° 25' 07" E
2	160.83'	60.00'	153° 34' 36"	116.82'	N 52° 41' 14" W
3	27.74'	50.00'	31° 47' 18"	27.39'	N 08° 12' 25" E
4	47.12'	30.00'	90° 00' 00"	42.43'	N 52° 41' 14" W

COUNTRY CREEK SUBDIVISION NO. 3

A PART OF THE NE., SE. & SW. 1/4 OF SEC. 30, T-4-N, R-11-E,
OAKLAND TOWNSHIP, OAKLAND COUNTY, MICHIGAN

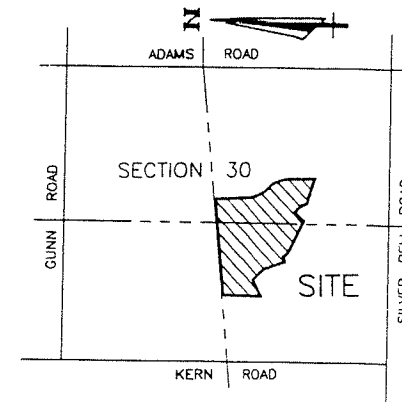
THE VILLAGE OF COUNTRY CREEK
OAKLAND COUNTY CONDOMINIUM PLAN NO. 838

SCALE 1" = 60'



COUNTRY CROSSING ROAD 86 FT. WIDE
LIBER 16268, P. 569

LIBER 259 PAGE 19
SHEET 2 OF 8 SHEETS



LOCATION MAP

SCALE 1" = 2000'

LEGEND

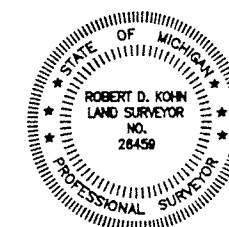
1. ALL DIMENSIONS ARE GIVEN IN FEET.
2. CURVILINEAR MEASUREMENTS ARE ARC DISTANCES.
3. CONCRETE MONUMENTS HAVE BEEN PLACED AT ALL POINTS MARKED "o".
4. CONCRETE MONUMENTS ARE STEEL BARS ONE-HALF (1/2) INCH IN DIAMETER AND THIRTY SIX (36) INCHES IN LENGTH, ENCASED IN A CONCRETE CYLINDER FOUR (4) INCHES IN DIAMETER, AND THIRTY SIX (36) INCHES IN LENGTH.
5. LOT CORNERS HAVE BEEN MARKED WITH STEEL BARS ONE-HALF (1/2) INCH IN DIAMETER, AND EIGHTEEN (18) INCHES IN LENGTH.
6. (R) INDICATES A RADIAL LINE.
7. (NR) INDICATES A NON RADIAL LINE.
8. L INDICATES A RIGHT ANGLE.
9. ■ DENOTES FOUND MONUMENT 1/2 INCH STEEL BAR ENCASED IN CONCRETE 4 INCHES IN DIAMETER.
10. BEARINGS FOR THIS SUBDIVISION ARE BASED UPON AN OBSERVATION OF POLARIS DATED DECEMBER 8, 1988.
11. USE OF THE WORD "PRIVATE" DOES NOT LIMIT IN ANY WAY THE SCOPE OF THE EASEMENT GRANTED TO THE NAME COUNTY DRAINAGE DISTRICT.

NOTE:
LOTS 169, 170, 178, 179 AND 180
SHALL NOT HAVE DIRECT VEHICULAR
ACCESS TO COUNTRY CROSSING ROAD.

CURVE DATA

CURVE	ARC	RADIUS	CENTRAL ANGLE	CHORD	CHORD BEARING
5	135.21'	200.00'	38° 44' 08"	132.65'	N 62° 36' 42" E
6	178.95'	260.00'	39° 26' 05"	175.44'	N 62° 35' 44" E
7	305.60'	280.00'	62° 32' 00"	290.65'	N 44° 53' 44" E
8	263.73'	220.00'	68° 41' 02"	248.22'	N 47° 58' 15" E
9	210.96'	305.00'	39° 37' 46"	206.78'	N 84° 15' 17" E
10	37.06'	50.00'	42° 27' 45"	36.21'	N 82° 50' 17" E
11	279.24'	60.00'	266° 39' 30"	87.29'	N 14° 56' 10" E
12	39.19'	50.00'	44° 54' 25"	38.19'	N 54° 11' 18" W
13	163.41'	245.00'	38° 12' 50"	160.39'	N 84° 15' 04" E
14	157.71'	290.00'	31° 09' 31"	155.77'	N 60° 47' 31" W

THIS PLAT IS SUBJECT TO RESTRICTIONS AS
REQUIRED BY ACT 288 OF 1967 AS AMENDED
ON CERTAIN LOTS WITH RESPECT TO THE
REQUIREMENTS OF THE OAKLAND COUNTY
DRAIN COMMISSIONER, WHICH ARE RECORDED
IN LIBER 18402, PAGES 566-574
OF RECORDS OF THIS COUNTY.



Robert D. Kohn

Giffels-Webster Engineers Inc.

ENGINEERS - SURVEYORS - PLANNERS
2871 BOND STREET ROCHESTER HILLS MICHIGAN
(810) 852-3100

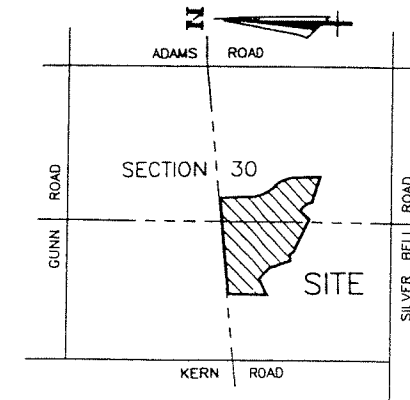
COUNTRY CREEK SUBDIVISION NO. 3

A PART OF THE NE., SE. & SW. 1/4 OF SEC. 30, T-4-N, R-11-E,
OAKLAND TOWNSHIP, OAKLAND COUNTY, MICHIGAN

SCALE 1" = 60'



LIBER 259 PAGE 20
SHEET 3 OF 8 SHEETS



LOCATION MAP

SCALE 1" = 2000'

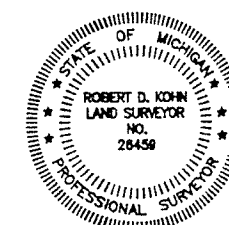
LEGEND

1. ALL DIMENSIONS ARE GIVEN IN FEET.
2. CURVILINEAR MEASUREMENTS ARE ARC DISTANCES.
3. CONCRETE MONUMENTS HAVE BEEN PLACED AT ALL POINTS MARKED "o".
4. CONCRETE MONUMENTS ARE STEEL BARS ONE-HALF (1/2) INCH IN DIAMETER AND THIRTY SIX (36) INCHES IN LENGTH, ENCASED IN A CONCRETE CYLINDER FOUR (4) INCHES IN DIAMETER, AND THIRTY SIX (36) INCHES IN LENGTH.
5. LOT CORNERS HAVE BEEN MARKED WITH STEEL BARS ONE-HALF (1/2) INCH IN DIAMETER, AND EIGHTEEN (18) INCHES IN LENGTH.
6. (R) INDICATES A RADIAL LINE.
7. (NR) INDICATES A NON RADIAL LINE.
8. L INDICATES A RIGHT ANGLE.
9. ■ DENOTES FOUND MONUMENT 1/2 INCH STEEL BAR ENCASED IN CONCRETE 4 INCHES IN DIAMETER.
10. BEARINGS FOR THIS SUBDIVISION ARE BASED UPON AN OBSERVATION OF POLARIS DATED DECEMBER 8, 1988.
11. USE OF THE WORD "PRIVATE" DOES NOT LIMIT IN ANY WAY THE SCOPE OF THE EASEMENT GRANTED TO THE NAME COUNTY DRAINAGE DISTRICT.

THIS PLAT IS SUBJECT TO RESTRICTIONS AS REQUIRED BY ACT 288 OF 1967 AS AMENDED ON CERTAIN LOTS WITH RESPECT TO THE REQUIREMENTS OF THE OAKLAND COUNTY DRAIN COMMISSIONER, WHICH ARE RECORDED IN LIBER 18408, PAGES 566-574 OF RECORDS OF THIS COUNTY.

CURVE DATA

CURVE	ARC	RADIUS	CENTRAL ANGLE	CHORD	CHORD BEARING
7	305.60'	280.00'	62° 32' 00"	290.65'	N 44° 53' 44" E
8	263.73'	220.00'	68° 41' 02"	248.22'	N 47° 58' 15" E
14	157.71'	290.00'	31° 09' 31"	155.77'	N 60° 47' 31" W
15	125.08'	230.00'	31° 09' 31"	123.54'	N 60° 47' 31" W
16	221.33'	730.00'	17° 22' 17"	220.48'	N 67° 41' 08" W
17	203.13'	670.00'	17° 22' 17"	202.36'	N 67° 41' 08" W
18	263.85'	260.00'	58° 08' 38"	252.67'	N 60° 04' 19" E
19	202.96'	200.00'	58° 08' 38"	194.36'	N 60° 04' 19" E
20	351.11'	520.00'	38° 41' 14"	344.48'	N 11° 39' 23" E
21	391.63'	580.00'	38° 41' 14"	384.23'	N 11° 39' 23" E



Robert D. Kohn

Giffels-Webster Engineers Inc.

ENGINEERS - SURVEYORS - PLANNERS
2871 BOND STREET ROCHESTER HILLS MICHIGAN
(810) 852-3100

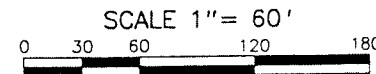
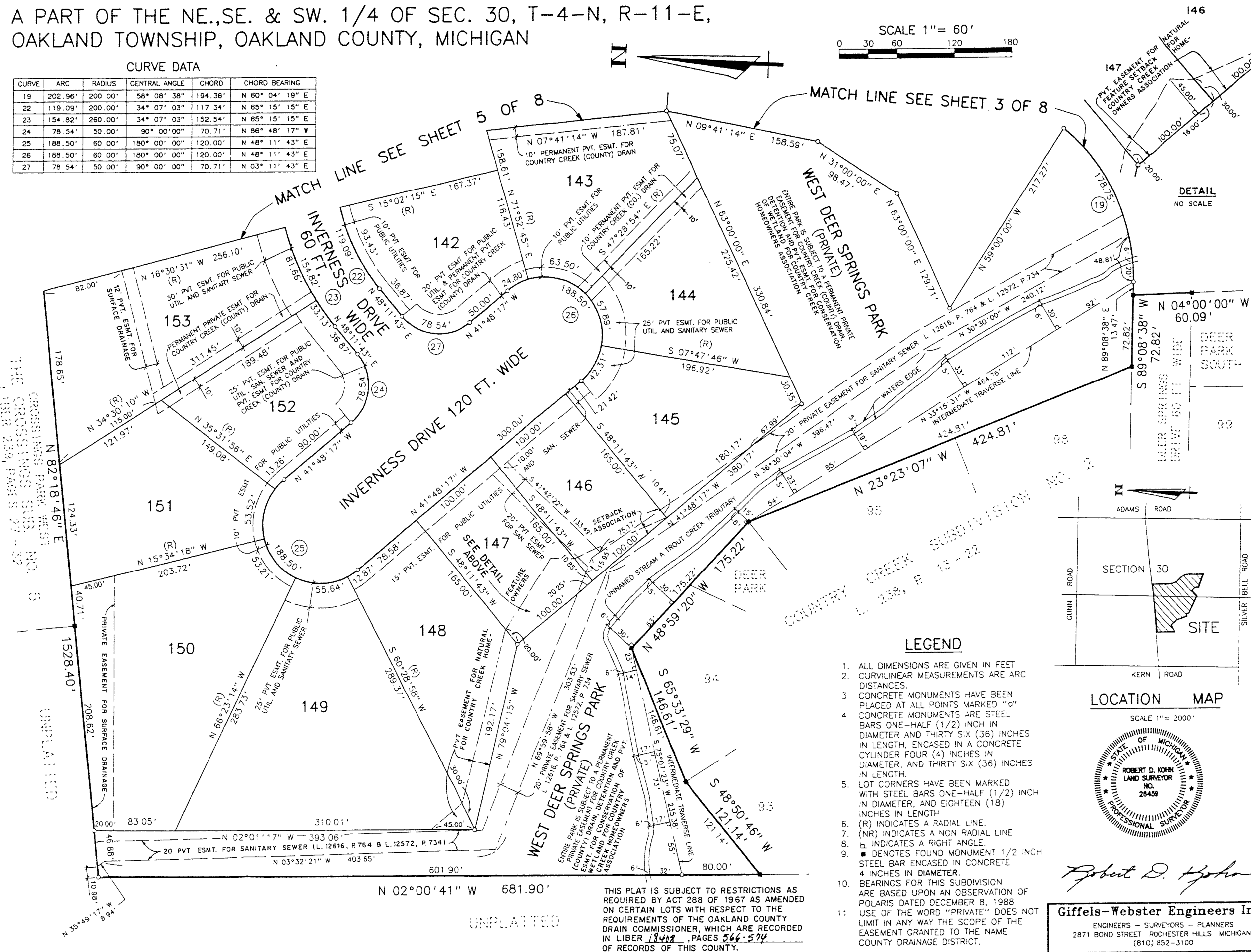
COUNTRY CREEK SUBDIVISION NO. 3

A PART OF THE NE., SE. & SW. 1/4 OF SEC. 30, T-4-N, R-11-E,
OAKLAND TOWNSHIP, OAKLAND COUNTY, MICHIGAN

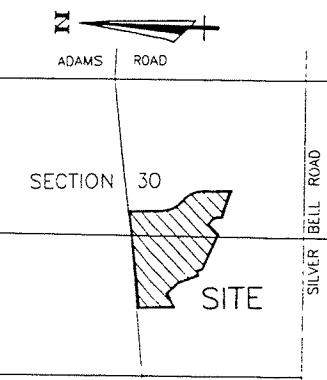
LIBER 257 PAGE 21
SHEET 4 OF 8 SHEETS

CURVE DATA

CURVE	ARC	RADIUS	CENTRAL ANGLE	CHORD	CHORD BEARING
19	202.96'	200.00'	58° 08' 38"	194.36'	N 80° 04' 19" E
22	119.09'	200.00'	34° 07' 03"	117.34'	N 65° 15' 15" E
23	154.82'	260.00'	34° 07' 03"	152.54'	N 65° 15' 15" E
24	78.54'	50.00'	90° 00' 00"	70.71'	N 86° 48' 17" W
25	188.50'	60.00'	180° 00' 00"	120.00'	N 48° 11' 43" E
26	188.50'	60.00'	180° 00' 00"	120.00'	N 48° 11' 43" E
27	78.54'	50.00'	90° 00' 00"	70.71'	N 03° 11' 43" E



DETAIL
NO SCALE



LEGEND

1. ALL DIMENSIONS ARE GIVEN IN FEET
2. CURVILINEAR MEASUREMENTS ARE ARC DISTANCES.
3. CONCRETE MONUMENTS HAVE BEEN PLACED AT ALL POINTS MARKED "C"
4. CONCRETE MONUMENTS ARE STEEL BARS ONE-HALF (1/2) INCH IN DIAMETER AND THIRTY SIX (36) INCHES IN LENGTH, ENCASED IN A CONCRETE CYLINDER FOUR (4) INCHES IN DIAMETER, AND THIRTY SIX (36) INCHES IN LENGTH.
5. LOT CORNERS HAVE BEEN MARKED WITH STEEL BARS ONE-HALF (1/2) INCH IN DIAMETER, AND EIGHTEEN (18) INCHES IN LENGTH.
6. (R) INDICATES A RADIAL LINE.
7. (NR) INDICATES A NON RADIAL LINE.
8. \square INDICATES A RIGHT ANGLE.
9. \blacksquare DENOTES FOUND MONUMENT 1/2 INCH STEEL BAR ENCASED IN CONCRETE 4 INCHES IN DIAMETER.
10. BEARINGS FOR THIS SUBDIVISION ARE BASED UPON AN OBSERVATION OF POLARIS DATED DECEMBER 8, 1988
11. USE OF THE WORD "PRIVATE" DOES NOT LIMIT IN ANY WAY THE SCOPE OF THE EASEMENT GRANTED TO THE NAME COUNTY DRAINAGE DISTRICT.

Robert D. Giffels

Giffels-Webster Engineers Inc.
ENGINEERS - SURVEYORS - PLANNERS
2871 BOND STREET ROCHESTER HILLS MICHIGAN
(810) 852-3100

THIS PLAT IS SUBJECT TO RESTRICTIONS AS REQUIRED BY ACT 288 OF 1967 AS AMENDED ON CERTAIN LOTS WITH RESPECT TO THE REQUIREMENTS OF THE OAKLAND COUNTY DRAIN COMMISSIONER, WHICH ARE RECORDED IN LIBER 18408, PAGES 566-574 OF RECORDS OF THIS COUNTY.

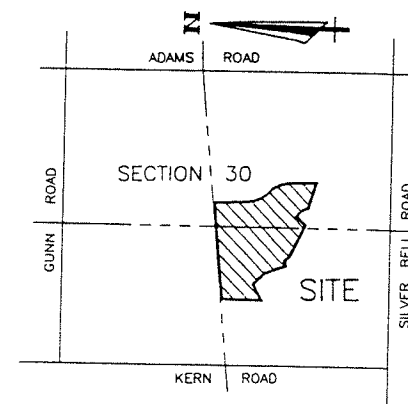
COUNTRY CREEK SUBDIVISION NO. 3

A PART OF THE NE., SE. & SW. 1/4 OF SEC. 30, T-4-N, R-11-E,
OAKLAND TOWNSHIP, OAKLAND COUNTY, MICHIGAN

SCALE 1" = 60'



LIBER 259 PAGE 22
SHEET 5 OF 8 SHEETS



LOCATION MAP

SCALE 1" = 2000'

LEGEND

1. ALL DIMENSIONS ARE GIVEN IN FEET
2. CURVILINEAR MEASUREMENTS ARE ARC DISTANCES.
3. CONCRETE MONUMENTS HAVE BEEN PLACED AT ALL POINTS MARKED "O"
4. CONCRETE MONUMENTS ARE STEEL BARS ONE-HALF (1/2) INCH IN DIAMETER AND THIRTY SIX (36) INCHES IN LENGTH, ENCASED IN A CONCRETE CYLINDER FOUR (4) INCHES IN DIAMETER, AND THIRTY SIX (36) INCHES IN LENGTH.
5. LOT CORNERS HAVE BEEN MARKED WITH STEEL BARS ONE-HALF (1/2) INCH IN DIAMETER, AND EIGHTEEN (18) INCHES IN LENGTH.
6. (R) INDICATES A RADIAL LINE.
7. (NR) INDICATES A NON RADIAL LINE.
8. \perp INDICATES A RIGHT ANGLE
9. \blacksquare DENOTES FOUND MONUMENT 1/2 INCH STEEL BAR ENCASED IN CONCRETE 4 INCHES IN DIAMETER.
10. BEARINGS FOR THIS SUBDIVISION ARE BASED UPON AN OBSERVATION OF POLARIS DATED DECEMBER 8, 1988
11. USE OF THE WORD "PRIVATE" DOES NOT LIMIT IN ANY WAY THE SCOPE OF THE EASEMENT GRANTED TO THE NAME COUNTY DRAINAGE DISTRICT.

THIS PLAT IS SUBJECT TO RESTRICTIONS AS REQUIRED BY ACT 288 OF 1967 AS AMENDED ON CERTAIN LOTS WITH RESPECT TO THE REQUIREMENTS OF THE OAKLAND COUNTY DRAIN COMMISSIONER, WHICH ARE RECORDED IN LIBER 18408, PAGES 566-574 OF RECORDS OF THIS COUNTY.

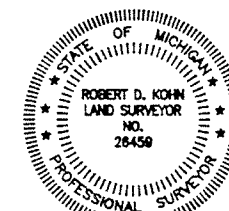
EXAMINED AND APPROVED

DATE 28 April 98
BY DEPARTMENT OF CONSUMER
AND INDUSTRY SERVICES

BY Waymond R. Dyer
WAYMOND R. DYER, P.S.
MANAGER
SUBDIVISION CONTROL UNIT

CURVE DATA

CURVE	ARC	RADIUS	CENTRAL ANGLE	CHORD	CHORD BEARING
20	351.11'	520.00'	38° 41' 14"	344.48'	N 11° 39' 23" E
21	391.63'	580.00'	38° 41' 14"	384.23'	N 11° 39' 23" E
22	119.09'	200.00'	34° 07' 03"	117.34'	N 65° 15' 15" E
23	154.82'	260.00'	34° 07' 03"	152.54'	N 65° 15' 15" E



Robert D. Kohn

Giffels-Webster Engineers Inc.

ENGINEERS - SURVEYORS - PLANNERS
2871 BOND STREET ROCHESTER HILLS MICHIGAN
(810) 852-3100

COUNTRY CREEK SUBDIVISION NO. 3

A PART OF THE NE.,SE. & SW. 1/4 OF SEC. 30, T-4-N, R-11-E,
OAKLAND TOWNSHIP, OAKLAND COUNTY, MICHIGAN

LIBER 257 PAGE 24
SHEET 7 OF 8 SHEETS

PROPRIETOR'S CERTIFICATE

WE, AS PROPRIETORS, CERTIFY THAT WE HAVE CAUSED THE LAND TO BE SURVEYED, DIVIDED, MAPPED AND DEDICATED AS REPRESENTED ON THIS PLAT AND THAT THE STREETS ARE FOR THE USE OF THE PUBLIC; THAT THE PUBLIC UTILITY EASEMENTS ARE PRIVATE EASEMENTS AND THAT ALL OTHER EASEMENTS ARE FOR THE USES SHOWN ON THE PLAT; THAT EAST DEER SPRINGS PARK AND WEST DEER SPRINGS PARK ARE PRIVATE PARKS FOR THE USE OF THE LOT OWNERS OF THIS SUBDIVISION AND FOR OTHER SUBDIVISIONS OF THE SAME NAME WHERE TITLE IS TRACEABLE TO THIS PROPRIETOR; THAT LOTS 161 THROUGH 170, INCLUSIVE AND LOTS 178, 179, AND 180 SHALL NOT HAVE DIRECT VEHICULAR ACCESS TO COUNTRY CROSSING ROAD; AND THAT WEST DEER SPRINGS PARK EXTENDS TO THE THREAD OF A TROUT CREEK TRIBUTARY AND IS SUBJECT TO THE CORRELATIVE RIGHTS OF OTHER RIPARIAN OWNERS AND THE PUBLIC TRUST IN THESE WATERS.

WITNESSES:

Jacqueline M. Kulinski
JACQUELINE M. KULINSKI

Barbara M. Hollins
BARBARA M. HOLLINS

Michael J. Ferrantino, Jr.
MICHAEL J. FERRANTINO, JR.
1349 HURON ST. SOUTH
YPSILANTI, MICHIGAN 48197

Kellie S. Ferrantino
KELLIE S. FERRANTINO
1349 HURON ST. SOUTH
YPSILANTI, MICHIGAN 48197

ACKNOWLEDGMENT:

STATE OF MICHIGAN)
) S.S.
COUNTY OF WASHTENAW)

PERSONALLY CAME BEFORE ME THIS 7th DAY OF January, 1997, MICHAEL J. FERRANTINO, JR. AND KELLIE S. FERRANTINO, HIS WIFE, TO ME KNOWN TO BE THE PERSONS WHO EXECUTED THE FOREGOING INSTRUMENT, AND ACKNOWLEDGED THAT THEY EXECUTED THE SAME AS THEIR FREE ACT AND DEED.

MY COMMISSION EXPIRES: 4/21/97 Jacqueline M. Kulinski
JACQUELINE M. KULINSKI
NOTARY PUBLIC, WAYNE COUNTY, MICHIGAN
ACTING IN WASHTENAW COUNTY, MICHIGAN

PROPRIETOR'S CERTIFICATE

I, JANETTE F. WILLIAMS, AS PROPRIETOR, CERTIFY THAT I HAVE CAUSED THE LAND TO BE SURVEYED, DIVIDED, MAPPED AND DEDICATED AS REPRESENTED ON THIS PLAT AND THAT THE STREETS ARE FOR THE USE OF THE PUBLIC; THAT THE PUBLIC UTILITY EASEMENTS ARE PRIVATE EASEMENTS, AND THAT ALL OTHER EASEMENTS ARE FOR THE USES SHOWN ON THE PLAT; THAT EAST DEER SPRINGS PARK AND WEST DEER SPRINGS PARK ARE PRIVATE PARKS FOR THE USE OF THE LOT OWNERS OF THIS SUBDIVISION AND FOR OTHER SUBDIVISIONS OF THE SAME NAME WHERE TITLE IS TRACEABLE TO THIS PROPRIETOR; THAT LOTS 161 THROUGH 170, INCLUSIVE AND LOTS 178, 179 AND 180 SHALL NOT HAVE DIRECT VEHICULAR ACCESS TO COUNTRY CROSSING ROAD; AND THAT WEST DEER SPRINGS PARK EXTENDS TO THE THREAD OF A TROUT CREEK TRIBUTARY AND IS SUBJECT TO THE CORRELATIVE RIGHTS OF OTHER RIPARIAN OWNERS AND THE PUBLIC TRUST IN THESE WATERS.

WITNESSES:

Jacqueline M. Kulinski
JACQUELINE M. KULINSKI

John M. Williams
JOHN M. WILLIAMS

Janette F. Williams
JANETTE F. WILLIAMS
3913 BARTON FARMS DRIVE
ANN ARBOR, MICHIGAN 48105

ACKNOWLEDGMENT:

STATE OF MICHIGAN)
) S.S.
COUNTY OF WASHTENAW)

PERSONALLY CAME BEFORE ME THIS 8th DAY OF January, 1997, JANETTE F. WILLIAMS, TO ME KNOWN TO BE THE PERSON WHO EXECUTED THE FOREGOING INSTRUMENT AND ACKNOWLEDGED THAT SHE EXECUTED THE SAME AS HER FREE ACT AND DEED.

MY COMMISSION EXPIRES: 4/21/97 Jacqueline M. Kulinski
JACQUELINE M. KULINSKI
NOTARY PUBLIC, WAYNE COUNTY, MICHIGAN
ACTING IN WASHTENAW COUNTY, MICHIGAN

PROPRIETOR'S CERTIFICATE

I, NANCY F. YOUNG, AS PROPRIETOR, CERTIFY THAT I CAUSED THE LAND TO BE SURVEYED, DIVIDED, MAPPED AND DEDICATED AS REPRESENTED ON THIS PLAT AND THAT THE STREETS ARE FOR THE USE OF THE PUBLIC; THAT THE PUBLIC UTILITY EASEMENTS ARE PRIVATE EASEMENTS AND THAT ALL OTHER EASEMENTS ARE FOR THE USES SHOWN ON THE PLAT; THAT EAST DEER SPRINGS PARK AND WEST DEER SPRINGS PARK ARE PRIVATE PARKS FOR THE USE OF THE LOT OWNERS OF THIS SUBDIVISION AND FOR OTHER SUBDIVISIONS OF THE SAME NAME WHERE TITLE IS TRACEABLE TO THIS PROPRIETOR; THAT LOTS 161 THROUGH 170, INCLUSIVE AND LOTS 178, 179 AND 180 SHALL NOT HAVE DIRECT VEHICULAR ACCESS TO COUNTRY CROSSING ROAD; AND THAT WEST DEER SPRINGS PARK EXTENDS TO THE THREAD OF A TROUT CREEK TRIBUTARY AND IS SUBJECT TO THE CORRELATIVE RIGHTS OF OTHER RIPARIAN OWNERS AND THE PUBLIC TRUST IN THESE WATERS.

WITNESSES:

Jacqueline M. Kulinski
JACQUELINE M. KULINSKI

John M. Williams
JOHN M. WILLIAMS

Nancy F. Young
NANCY F. YOUNG
3125 W. DOBSON
ANN ARBOR, MICHIGAN 48105

ACKNOWLEDGMENT:

STATE OF MICHIGAN)
) S.S.
COUNTY OF WASHTENAW)

PERSONALLY CAME BEFORE ME THIS 8th DAY OF January, 1997, NANCY F. YOUNG, TO ME KNOWN TO BE THE PERSON WHO EXECUTED THE FOREGOING INSTRUMENT, AND ACKNOWLEDGED THAT SHE EXECUTED THE SAME AS HER FREE ACT AND DEED.

MY COMMISSION EXPIRES: 4/21/97 Jacqueline M. Kulinski
JACQUELINE M. KULINSKI
NOTARY PUBLIC, WAYNE COUNTY, MICHIGAN
ACTING IN WASHTENAW COUNTY, MICHIGAN

PROPRIETOR'S CERTIFICATE

I, JOHN M. WILLIAMS, AS PROPRIETOR, CERTIFY THAT I HAVE CAUSED THE LAND TO BE SURVEYED, DIVIDED, MAPPED AND DEDICATED AS REPRESENTED ON THIS PLAT AND THAT THE STREETS ARE FOR THE USE OF THE PUBLIC; THAT THE PUBLIC UTILITY EASEMENTS ARE PRIVATE EASEMENTS, AND THAT ALL OTHER EASEMENTS ARE FOR THE USES SHOWN ON THE PLAT; THAT EAST DEER SPRINGS PARK AND WEST DEER SPRINGS PARK ARE PRIVATE PARKS FOR THE USE OF THE LOT OWNERS OF THIS SUBDIVISION AND FOR OTHER SUBDIVISIONS OF THE SAME NAME WHERE TITLE IS TRACEABLE TO THIS PROPRIETOR; THAT LOTS 161 THROUGH 170, INCLUSIVE AND LOTS 178, 179 AND 180 SHALL NOT HAVE DIRECT VEHICULAR ACCESS TO COUNTRY CROSSING ROAD; AND THAT WEST DEER SPRINGS PARK EXTENDS TO THE THREAD OF A TROUT CREEK TRIBUTARY AND IS SUBJECT TO THE CORRELATIVE RIGHTS OF OTHER RIPARIAN OWNERS AND THE PUBLIC TRUST IN THESE WATERS.

WITNESSES:

Shannon Micallef
SHANNON MICALLEF

Tina M. Mulholland
TINA M. MULHOLLAND

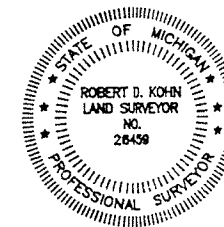
John M. Williams
JOHN M. WILLIAMS
2630 ENGLAVE DRIVE
ANN ARBOR, MICHIGAN 48103

ACKNOWLEDGMENT:

STATE OF MICHIGAN)
) S.S.
COUNTY OF OAKLAND)

PERSONALLY CAME BEFORE ME THIS 8th DAY OF January, 1997, JOHN M. WILLIAMS, A SINGLE MAN, TO ME KNOWN TO BE THE PERSON WHO EXECUTED THE FOREGOING INSTRUMENT AND ACKNOWLEDGED THAT HE EXECUTED THE SAME AS HIS FREE ACT AND DEED.

MY COMMISSION EXPIRES: 10/11/97 Barbara M. Hollins
BARBARA M. HOLLINS
NOTARY PUBLIC, MACOMB COUNTY, MICHIGAN
ACTING IN OAKLAND COUNTY, MICHIGAN



Robert D. Kohn

Giffels-Webster Engineers Inc.
ENGINEERS - SURVEYORS - PLANNERS
2871 BOND STREET ROCHESTER HILLS MICHIGAN
(810) 852-3100

COUNTRY CREEK SUBDIVISION NO. 3

A PART OF THE NE.,SE. & SW. 1/4 OF SEC. 30, T-4-N, R-11-E,
OAKLAND TOWNSHIP, OAKLAND COUNTY, MICHIGAN

LIBER 259 PAGE 25
SHEET 8 OF 8 SHEETS

COUNTY TREASURER'S CERTIFICATE:

THE RECORDS IN MY OFFICE SHOW NO UNPAID TAXES OR SPECIAL ASSESSMENTS FOR THE FIVE YEARS PRECEDING January 16, 1997 INVOLVING THE LANDS INCLUDED IN THIS PLAT.

Arthur N. Halsey
ARTHUR N. HALSEY
C. HUGH BOHANY
OAKLAND COUNTY DEPUTY TREASURER

RECERTIFIED: Jan. 15, 1998

C. Hugh Bohany
C. HUGH BOHANY
PATRICK M. BOHANY, CHIEF DEPUTY
OAKLAND COUNTY TREASURER

COUNTY ROAD COMMISSION CERTIFICATE:

APPROVED ON AUGUST 13, 1997 AS COMPLYING WITH SECTION 183, OF ACT 288, P.A. 1967, AND THE APPLICABLE PUBLISHED RULES AND REGULATIONS OF THE BOARD OF ROAD COMMISSIONERS OF THE COUNTY OF OAKLAND.

Richard G. Skarritt
RICHARD G. SKARRITT
CHAIRPERSON

Rudy D. Lozano
RUDY D. LOZANO
VICE-CHAIRPERSON

Larry P. Crake
LARRY P. CRAKE
COMMISSIONER

COUNTY PLAT BOARD CERTIFICATE:

THIS PLAT HAS BEEN REVIEWED AND IS APPROVED BY THE OAKLAND COUNTY PLAT BOARD ON JANUARY 23, 1998, AS BEING IN COMPLIANCE WITH ALL OF THE PROVISIONS OF ACT 288, P.A. 1967; AND THE PLAT BOARD'S APPLICABLE RULES AND REGULATIONS.

J. P. MC CULLOCH
J. P. MC CULLOCH
CHAIRMAN OF THE BOARD OF
COMMISSIONERS

C. Hugh Bohany
C. HUGH BOHANY
COUNTY TREASURER

James Smith
JAMES SMITH, P.S.
COUNTY PLAT ENGINEER

Lynn D. Allen
LYNN D. ALLEN, COUNTY CLERK
REGISTER OF DEEDS

COUNTY DRAIN COMMISSIONER'S CERTIFICATE:

APPROVED ON Feb. 4, 1997 AS COMPLYING WITH SECTION 192, OF ACT 288, P.A. 1967, AND THE APPLICABLE RULES AND REGULATIONS PUBLISHED BY MY OFFICE IN THE COUNTY OF OAKLAND.

George W. Kohn
GEORGE W. KOHN
OAKLAND COUNTY DRAIN COMMISSIONER

CERTIFICATE OF MUNICIPAL APPROVAL:

I CERTIFY THAT THIS PLAT WAS APPROVED BY THE TOWNSHIP BOARD OF OAKLAND AT A MEETING HELD ON October 14, 1997 AND WAS REVIEWED AND FOUND TO BE IN COMPLIANCE WITH ACT 288 P.A. 1967, ALSO ADEQUATE SURETY HAS BEEN DEPOSITED WITH THE CLERK FOR THE PLACING OF MONUMENTS AND LOT MARKERS WITHIN A REASONABLE LENGTH OF TIME, NOT TO EXCEED ONE YEAR FROM THE ABOVE DATE, AND THAT PUBLIC SEWER AND PUBLIC WATER SERVICES HAVE BEEN INSTALLED AND ARE READY FOR CONNECTION.

Carolyn L. Phelps
CAROLYN PHELPS, CLERK

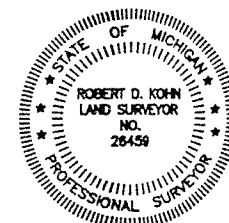
RECORDING CERTIFICATE:

STATE OF MICHIGAN)

OAKLAND COUNTY)

THIS PLAT WAS RECEIVED FOR RECORD ON THE 29TH DAY OF APRIL 1998, AT 4:20 PM, AND RECORDED IN LIBER 259 OF PLATS ON PAGES 18, 19, 20, 21, 22, 23

Lynn D. Allen
LYNN D. ALLEN, COUNTY CLERK
REGISTER OF DEEDS
By: Suzanne R. Payne
SUZANNE R. PAYNE, DEPUTY



Robert D. Kohn

Giffels-Webster Engineers Inc.
ENGINEERS - SURVEYORS - PLANNERS
2871 BOND STREET ROCHESTER HILLS MICHIGAN
(810) 852-3100

COUNTRY CREEK SUBDIVISION NO. 3

A PART OF THE NE.,SE. & SW. 1/4 OF SEC. 30, T-4-N, R-11-E,
OAKLAND TOWNSHIP, OAKLAND COUNTY, MICHIGAN

LIBER 259 PAGE 23
SHEET 6 OF 8 SHEETS

SURVEYOR'S CERTIFICATE

I, ROBERT D. KOHN, SURVEYOR, CERTIFY THAT I HAVE SURVEYED, DIVIDED, AND MAPPED THE LAND SHOWN ON THIS PLAT, DESCRIBED AS "COUNTRY CREEK SUBDIVISION NO. 3", A PART OF THE NORTHEAST, SOUTHEAST AND SOUTHWEST 1/4 OF SECTION 30, T-4-N., R-11-E., OAKLAND TOWNSHIP, OAKLAND COUNTY, MICHIGAN, MORE PARTICULARLY DESCRIBED AS: COMMENCING AT THE EAST 1/4 CORNER OF SAID SECTION 30; THENCE S. 82° 38' 03" W., 2,265.81 FEET ALONG THE EAST/WEST 1/4 LINE OF SAID SECTION 30 TO THE POINT OF BEGINNING ON THE WESTERLY LINE OF "WOODS OF COUNTRY CREEK" AS RECORDED IN LIBER 242, PAGES 13 THROUGH 20 OF PLATS, OAKLAND COUNTY RECORDS, THE FOLLOWING FIVE COURSES BEING ALONG SAID WESTERLY LINES: (1) S. 05° 24' 44" W., 83.43 FEET, AND (2) ALONG A CURVE TO THE LEFT 118.43 FEET, SAID CURVE HAVING A RADIUS OF 518.00 FEET, CENTRAL ANGLE OF 13° 05' 58" AND A LONG CHORD BEARING OF S. 01° 08' 15" E., 118.17 FEET, AND (3) S. 07° 41' 14" E., 377.54 FEET, AND (4) ALONG A CURVE TO THE LEFT 408.19 FEET, SAID CURVE HAVING A RADIUS OF 560.00 FEET, CENTRAL ANGLE OF 41° 45' 48" AND A LONG CHORD BEARING OF S. 28° 34' 08" E., 399.21 FEET, AND (5) S. 49° 27' 02" E., 100.00 FEET; THENCE IN PART ALONG SAID WESTERLY LINE ALONG A CURVE TO THE RIGHT 335.64 FEET, SAID CURVE HAVING A RADIUS OF 414.00 FEET, CENTRAL ANGLE OF 46° 27' 02" AND A LONG CHORD BEARING OF S. 26° 13' 31" E., 326.52 FEET; THENCE S. 03° 00' 00" E., 422.15 FEET TO A POINT ON THE NORTHERLY LINE OF "COUNTRY CREEK SUBDIVISION NO. 1", AS RECORDED IN LIBER 230, PAGES 28 THROUGH 35 OF PLATS, OAKLAND COUNTY RECORDS, THE FOLLOWING FIVE COURSES BEING ALONG SAID NORTHERLY LINE: (1) N. 75° 01' 02" W., 481.93 FEET, AND (2) ALONG A NON-TANGENT CURVE TO THE LEFT 251.08 FEET, SAID CURVE HAVING A RADIUS OF 290.00 FEET, CENTRAL ANGLE OF 49° 36' 25" AND A LONG CHORD BEARING OF N. 20° 24' 33" W., 243.31 FEET, AND (3) S. 44° 47' 14" W., 60.00 FEET, AND (4) S. 49° 46' 33" W., 162.25 FEET, AND (5) N. 73° 30' 00" W., 677.68 FEET TO A POINT ON THE EASTERLY LINE OF "COUNTRY CREEK SUBDIVISION NO. 2" AS RECORDED IN LIBER 238, PAGES 13 THROUGH 22 OF PLATS, OAKLAND COUNTY RECORDS, THE FOLLOWING SIX COURSES BEING ALONG THE EASTERLY AND NORTHERLY LINES OF SAID SUBDIVISION: (1) N. 04° 00' 00" W., 60.09 FEET, AND (2) S. 89° 08' 38" W., 72.82 FEET, AND (3) N. 23° 23' 07" W., 424.81 FEET, AND (4) N. 48° 59' 20" W., 175.22 FEET, AND (5) S. 65° 33' 29" W., 146.61 FEET, AND (6) S. 48° 50' 46" W., 121.14 FEET; THENCE N. 02° 00' 41" W., 681.90 FEET; THENCE N. 82° 18' 46" E., 1,528.40 FEET TO A POINT ON THE WESTERLY LINE OF SAID "WOODS OF COUNTRY CREEK"; THENCE S. 05° 24' 44" W., 1.61 FEET ALONG SAID LINE TO THE POINT OF BEGINNING AND CONTAINING 48.37 ACRES AND COMPRISING OF 69 LOTS NUMBERED 134 THROUGH 202 INCLUSIVE AND TWO PRIVATE PARKS.

THAT I HAVE MADE SUCH SURVEY, LAND DIVISION AND PLAT BY THE DIRECTION OF THE OWNERS OF SUCH LAND.

THAT SUCH PLAT IS A CORRECT REPRESENTATION OF ALL THE EXTERIOR BOUNDARIES OF THE LAND SURVEYED AND THE SUBDIVISION OF IT.

THAT THE REQUIRED MONUMENTS AND LOT MARKERS HAVE BEEN LOCATED IN THE GROUND OR THAT SURETY HAS BEEN DEPOSITED WITH THE MUNICIPALITY, AS REQUIRED BY SECTION 125 OF THE ACT.

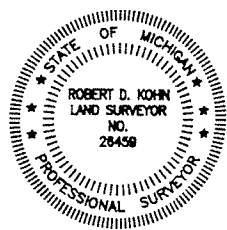
THAT THE ACCURACY OF SURVEY IS WITHIN THE LIMITS REQUIRED BY SECTION 126 OF THE ACT.

THAT THE BEARINGS SHOWN ON THE PLAT ARE EXPRESSED AS REQUIRED BY SECTION 126 (3) OF THE ACT AND AS EXPLAINED IN THE LEGEND.

GIFFELS-WEBSTER ENGINEERS, INC.
2871 BOND STREET
ROCHESTER HILLS, MICHIGAN 48309-3515

DATE: DECEMBER 6, 1996

Robert D. Kohn
ROBERT D. KOHN, P.S. #26459
VICE-PRESIDENT



PROPRIETOR'S CERTIFICATE

EAGLE CREEK MASTER LIMITED PARTNERSHIP DULY ORGANIZED AND EXISTING UNDER THE LAWS OF THE STATE OF MICHIGAN, BY EAGLE CREEK DEVELOPMENT LIMITED PARTNERSHIP, GENERAL PARTNER, AS PROPRIETOR HAS CAUSED THE LAND TO BE SURVEYED, DIVIDED, MAPPED AND DEDICATED AS REPRESENTED ON THIS PLAT AND THAT THE STREETS ARE FOR THE USE OF THE PUBLIC; THAT THE PUBLIC UTILITY EASEMENTS ARE PRIVATE EASEMENTS AND THAT ALL OTHER EASEMENTS ARE FOR THE USES SHOWN ON THE PLAT; THAT EAST DEER SPRINGS PARK AND WEST DEER SPRINGS PARK ARE PRIVATE PARKS FOR THE USE OF THE LOT OWNERS OF THIS SUBDIVISION AND FOR OTHER SUBDIVISIONS OF THE SAME NAME WHERE TITLE IS TRACEABLE TO THIS PROPRIETOR; THAT LOTS 161 THROUGH 170, INCLUSIVE AND LOTS 178, 179 AND 180 SHALL NOT HAVE DIRECT VEHICULAR ACCESS TO COUNTRY CROSSING ROAD; AND THAT WEST DEER SPRINGS PARK EXTENDS TO THE THREAD OF A TROUT CREEK TRIBUTARY AND IS SUBJECT TO THE CORRELATIVE RIGHTS OF OTHER RIPARIAN OWNERS AND THE PUBLIC TRUST IN THESE WATERS.

WITNESSES:

Shannon Micallef
Shannon Micallef

Tina M. Mulholland
Tina M. Mulholland

BY:

Laurence R. Goss
LAURENCE R. GOSS
VICE PRESIDENT

B-K ADAMS SILVERBELL ASSOCIATES, INC.
30100 TELEGRAPH ROAD, SUITE 366
BINGHAM FARMS, MICHIGAN 48025
GENERAL PARTNER OF:

SILVERBELL ADAMS ASSOCIATES
LIMITED PARTNERSHIP
30100 TELEGRAPH ROAD, SUITE 366
BINGHAM FARMS, MICHIGAN 48025
FILE L15-420, OAKLAND COUNTY RECORDS
AND

BY: Michael J. Ferrantino, Jr.
MICHAEL J. FERRANTINO, JR.
PRESIDENT OF:

TINO FERRA ENTERPRISES, INC.
1349 HURON ST. SOUTH
YPSILANTI, MICHIGAN 48197
GENERAL PARTNERS OF:

EAGLE CREEK DEVELOPMENT
LIMITED PARTNERSHIP
30100 TELEGRAPH ROAD, SUITE 366
BINGHAM FARMS, MICHIGAN 48025
FILE L15-439 (AMENDED 12/18/95)
OAKLAND COUNTY RECORDS
GENERAL PARTNER

EAGLE CREEK MASTER LIMITED PARTNERSHIP
30100 TELEGRAPH ROAD, SUITE 366
BINGHAM FARMS, MICHIGAN 48025
FILE L15-473, OAKLAND COUNTY RECORDS

ACKNOWLEDGMENT:

STATE OF MICHIGAN)
) S.S.
COUNTY OF OAKLAND)

PERSONALLY CAME BEFORE ME THIS 17th DAY OF December, 19 96 LAURENCE R. GOSS, VICE PRESIDENT OF B-K ADAMS SILVERBELL ASSOCIATES, INC., GENERAL PARTNER OF SILVERBELL ADAMS ASSOCIATES LIMITED PARTNERSHIP AND MICHAEL J. FERRANTINO, JR. PRESIDENT OF TINO FERRA ENTERPRISES, GENERAL PARTNERS OF EAGLE CREEK DEVELOPMENT LIMITED PARTNERSHIP, GENERAL PARTNER OF EAGLE CREEK MASTER LIMITED PARTNERSHIP. TO ME KNOWN TO BE THE PERSONS WHO EXECUTED THE FOREGOING INSTRUMENT, AND TO ME KNOWN TO BE SUCH PARTNERS, AND ACKNOWLEDGED THAT THEY EXECUTED THE FOREGOING INSTRUMENT AS SUCH PARTNERS AS THEIR FREE ACT AND DEED OF SAID LIMITED PARTNERSHIP.

MY COMMISSION EXPIRES: 10/11/97

Barbara M. Hollins
BARBARA M. HOLLINS, NOTARY PUBLIC
MACOMB COUNTY, MICHIGAN
ACTING IN OAKLAND COUNTY, MICHIGAN

PROPRIETOR'S CERTIFICATE

COMERICA BANK, A CORPORATION DULY ORGANIZED AND EXISTING UNDER THE LAWS OF THE STATE OF MICHIGAN, BY W. TODD GLENN, ACCOUNT OFFICER, AS PROPRIETOR HAS CAUSED THE LAND TO BE SURVEYED, DIVIDED, MAPPED AND DEDICATED AS REPRESENTED ON THIS PLAT AND THAT THE STREETS ARE FOR THE USE OF THE PUBLIC; THAT THE PUBLIC UTILITY EASEMENTS ARE FOR THE USES SHOWN ON THE PLAT; THAT EAST DEER SPRINGS PARK AND WEST DEER SPRINGS PARK ARE PRIVATE PARKS FOR THE USE OF THE LOT OWNERS OF THIS SUBDIVISION AND FOR OTHER SUBDIVISIONS OF THE SAME NAME WHERE TITLE IS TRACEABLE TO THIS PROPRIETOR; THAT LOTS 161 THROUGH 170, INCLUSIVE AND LOTS 178, 179 AND 180 SHALL NOT HAVE DIRECT VEHICULAR ACCESS TO COUNTRY CROSSING ROAD; AND THAT WEST DEER SPRINGS PARK EXTENDS TO THE THREAD OF A TROUT CREEK TRIBUTARY AND IS SUBJECT TO THE CORRELATIVE RIGHTS OF OTHER RIPARIAN OWNERS AND THE PUBLIC TRUST IN THESE WATERS.

WITNESSES:

BY:

COMERICA BANK
29201 TELEGRAPH ROAD
SOUTHFIELD, MICHIGAN
SUCCESSOR BY MERGER TO
MANUFACTURERS NATIONAL BANK

Shannon Micallef
Shannon Micallef

Tina M. Mulholland
Tina M. Mulholland

BY: W. Todd Glenn
W. TODD GLENN
ACCOUNT OFFICER

ACKNOWLEDGMENT:

STATE OF MICHIGAN)
) S.S.
COUNTY OF OAKLAND)

PERSONALLY CAME BEFORE ME THIS 17th DAY OF December, 19 96 W. TODD GLENN, ACCOUNT OFFICER OF THE ABOVE NAMED CORPORATION, TO ME KNOWN TO BE THE PERSON WHO EXECUTED THE FOREGOING INSTRUMENT, AND TO ME KNOWN TO BE SUCH ACCOUNT OFFICER OF SAID CORPORATION, AND ACKNOWLEDGED THAT HE EXECUTED THE FOREGOING INSTRUMENT AS SUCH OFFICER AS HIS FREE ACT AND DEED OF SAID CORPORATION BY ITS AUTHORITY.

MY COMMISSION EXPIRES: 10/11/97

Barbara M. Hollins
BARBARA M. HOLLINS
NOTARY PUBLIC
MACOMB COUNTY, MICHIGAN
ACTING IN OAKLAND COUNTY, MICHIGAN

Giffels-Webster Engineers Inc.
ENGINEERS - SURVEYORS - PLANNERS
2871 BOND STREET ROCHESTER HILLS MICHIGAN
(810) 852-3100