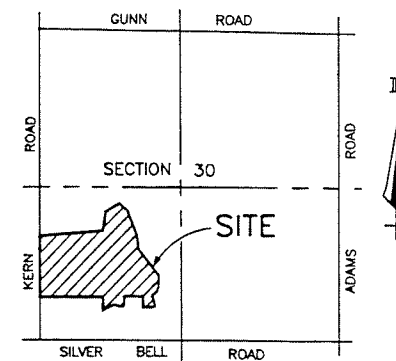


# COUNTRY CREEK SUBDIVISION NO. 2

 LIBER 238 PAGE 13  
 SHEET 1 OF 10 SHEETS

 A PART OF THE SOUTHWEST 1/4 OF SECTION 30, T-4-N, R-11-E,  
 OAKLAND TOWNSHIP, OAKLAND COUNTY, MICHIGAN

 SCALE 1" = 60'  
 0 30 60 120 180

 LOCATION MAP  
 SCALE 1" = 2000'

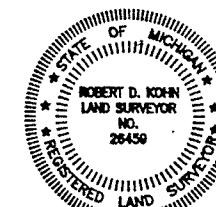
EXAMINED AND APPROVED

 Date March 1, 1995  
 BY THE DEPARTMENT  
 OF COMMERCE

Maynard R. Dyer  
 Maynard R. Dyer, P.S.  
 Manager  
 Subdivision Control Unit

## LEGEND

- ALL DIMENSIONS ARE GIVEN IN FEET.
- CURVILINEAR MEASUREMENTS ARE ARC DISTANCES.
- CONCRETE MONUMENTS HAVE BEEN PLACED AT ALL POINTS MARKED "O".
- CONCRETE MONUMENTS ARE STEEL BARS ONE-HALF (1/2) INCH IN DIAMETER AND THIRTY SIX (36) INCHES IN LENGTH, ENCASED IN A CONCRETE CYLINDER FOUR (4) INCHES IN DIAMETER, AND THIRTY SIX (36) INCHES IN LENGTH.
- LOT CORNERS HAVE BEEN MARKED WITH STEEL BARS ONE-HALF (1/2) INCH IN DIAMETER, AND EIGHTEEN (18) INCHES IN LENGTH.
- (R) INDICATES A RADIAL LINE.
- ⊥ INDICATES A RIGHT ANGLE.
- BEARINGS FOR THIS SUBDIVISION ARE BASED UPON AN OBSERVATION OF POLARIS DATED DECEMBER 8, 1988.
- DENOTES FOUND MONUMENT AS DESCRIBED IN ITEM 4 OF THIS LEGEND.
- USE OF THE WORD "PRIVATE" DOES NOT LIMIT IN ANY WAY THE SCOPE OF THE EASEMENT GRANTED TO THE NAME COUNTY DRAINAGE DISTRICT.


Robert D. Kohn
**Giffels-Webster Engineers Inc.**  
 ENGINEERS - SURVEYORS - PLANNERS  
 2871 BOND STREET ROCHESTER HILLS MICHIGAN  
 (313) 852-3100

MATCH LINE SEE SHEET 2 OF 10 SHEETS

MATCH LINE SEE SHEET 4 OF 10 SHEETS

UNPLATTED

UNPLATTED

## CURVE DATA

CURVE	ARC	RADIUS	CENTRAL ANGLE	CHORD	CHORD BEARING
1	16.51'	100.00'	09° 27' 44"	16.50'	N 03° 08' 56" E
2	46.36'	100.00'	26° 33' 54"	45.95'	N 14° 51' 53" W
3	16.51'	100.00'	09° 27' 44"	16.50'	N 03° 08' 56" E
4	46.28'	100.00'	26° 31' 01"	45.87'	N 14° 53' 20" W

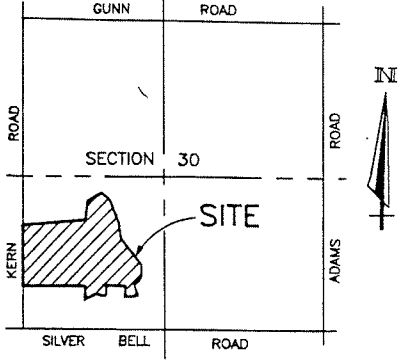
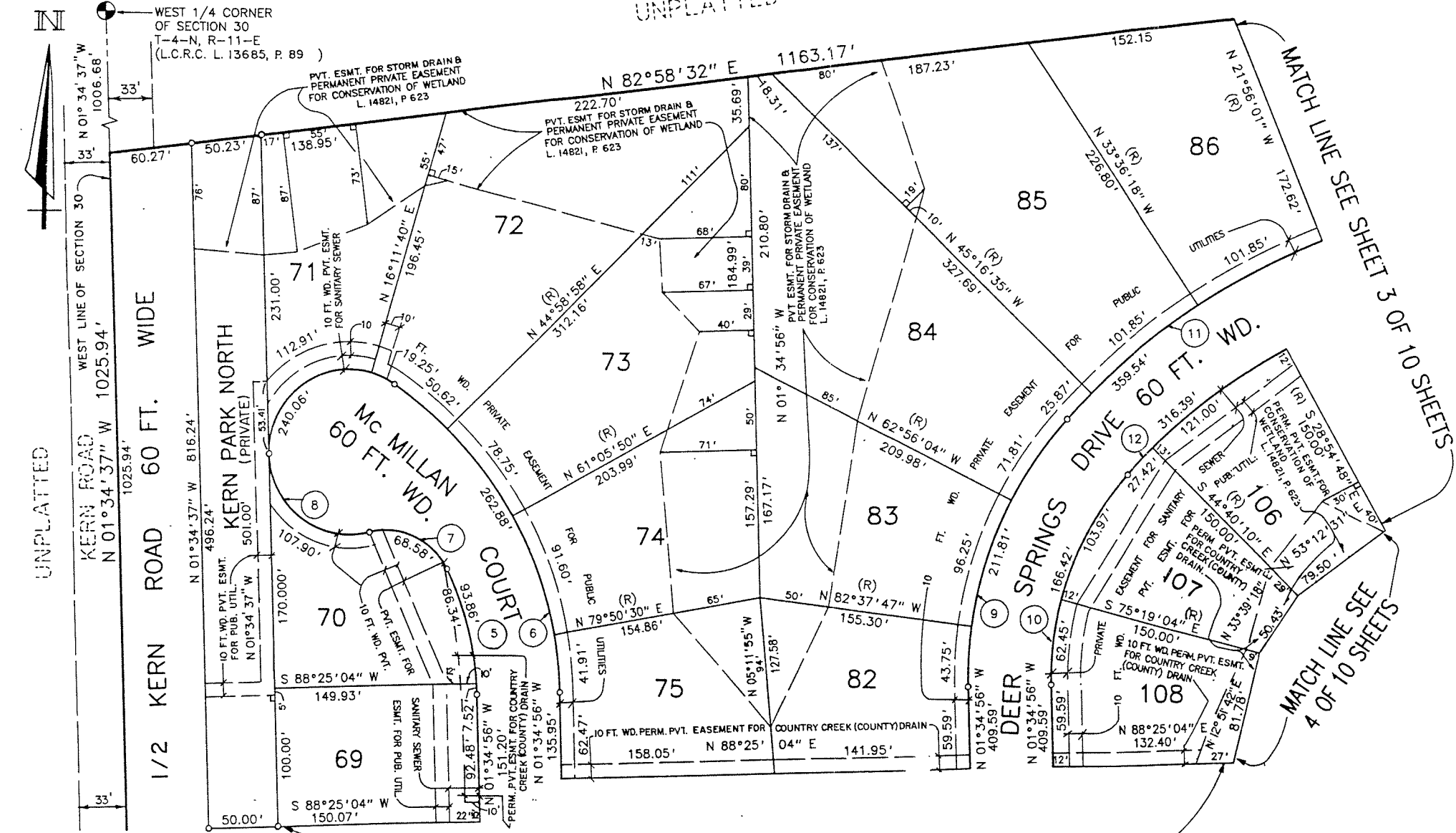
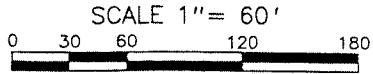
 SOUTHWEST CORNER  
 OF SECTION 30  
 T-4-N, R-11-E  
 (L.C.R.C. L. 14394, P. 597)

RESTRICTIONS RECORDED 3/1/95 LIBER 15279 Pages 688-697

COUNTRY CREEK SUBDIVISION NO. 2

A PART OF THE SOUTHWEST 1/4 OF SECTION 30, T-4-N, R-11-E,  
OAKLAND TOWNSHIP, OAKLAND COUNTY, MICHIGAN

LIBER 238 PAGE 14  
SHEET 2 OF 10 SHEETS



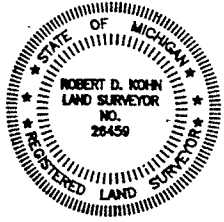
LOCATION MAP  
SCALE 1" = 2000'

LEGEND

- 1. ALL DIMENSIONS ARE GIVEN IN FEET.
- 2. CURVILINEAR MEASUREMENTS ARE ARC DISTANCES.
- 3. CONCRETE MONUMENTS HAVE BEEN PLACED AT ALL POINTS MARKED "O".
- 4. CONCRETE MONUMENTS ARE STEEL BARS ONE-HALF (1/2) INCH IN DIAMETER AND THIRTY SIX (36) INCHES IN LENGTH, ENCASED IN A CONCRETE CYLINDER FOUR (4) INCHES IN DIAMETER, AND THIRTY SIX (36) INCHES IN LENGTH.
- 5. LOT CORNERS HAVE BEEN MARKED WITH STEEL BARS ONE-HALF (1/2) INCH IN DIAMETER, AND EIGHTEEN (18) INCHES IN LENGTH.
- 6. (R) INDICATES A RADIAL LINE.
- 7. L INDICATES A RIGHT ANGLE.
- 8. BEARINGS FOR THIS SUBDIVISION ARE BASED UPON AN OBSERVATION OF POLARIS DATED DECEMBER 8, 1988.
- 9. D DENOTES FOUND MONUMENT AS DESCRIBED IN ITEM 4 OF THIS LEGEND.
- 10. USE OF THE WORD "PRIVATE" DOES NOT LIMIT IN ANY WAY THE SCOPE OF THE EASEMENT GRANTED TO THE NAME COUNTY DRAINAGE DISTRICT.

CURVE DATA

CURVE	ARC	RADIUS	CENTRAL ANGLE	CHORD	CHORD BEARING
5	93.86'	220.00'	24° 26' 42"	93.15'	N 13° 48' 16" W
6	262.88'	280.00'	53° 47' 36"	253.33'	N 28° 28' 42" W
7	68.58'	50.00'	78° 35' 17"	63.33'	N 65° 19' 15" W
8	240.06'	60.00'	229° 14' 24"	109.09'	N 10° 00' 18" E
9	211.81'	280.00'	43° 20' 30"	206.79'	N 20° 05' 19" E
10	166.42'	220.00'	43° 20' 30"	162.48'	N 20° 05' 19" E
11	359.54'	500.00'	41° 12' 00"	351.84'	N 62° 21' 35" E
12	316.39'	440.00'	41° 12' 00"	309.62'	N 62° 21' 35" E



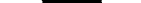
*Robert D. Kohn*

Giffels-Webster Engineers Inc.  
ENGINEERS - SURVEYORS - PLANNERS  
2871 BOND STREET ROCHESTER HILLS MICHIGAN  
(313) 852-3100

RESTRICTIONS RECORDED 3/1/95 LIBER 15279 Pages 688-697

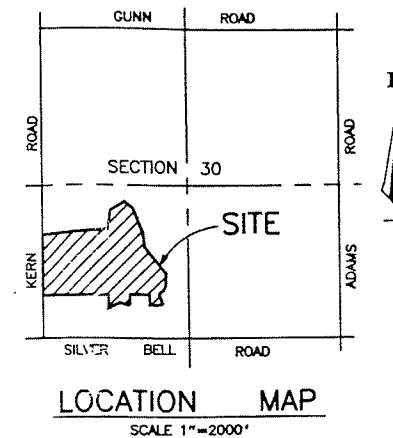
LIBER 238 PAGE 15  
SHEET 3 OF 10 SHEETS

SCALE 1" = 60'

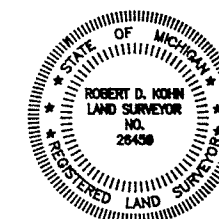


A horizontal scale bar with alternating black and white segments. It is marked with the numbers 0, 30, 60, 120, and 180, representing feet.

CURVE	ARC	RADIUS	CENTRAL ANGLE	CHORD	CHORD BEARING
11	359.54'	500.00'	41° 12' 00"	351.84'	N 62° 21' 35" E
12	316.39'	440.00'	41° 12' 00"	309.62'	N 62° 21' 35" E
13	57.03'	280.00'	11° 40' 10"	58.93'	N 77° 07' 30" E
14	44.81'	220.00'	11° 40' 10"	44.73'	N 77° 07' 30" E
15	81.55'	280.00'	16° 14' 18"	81.27'	N 10° 21' 56" W
16	64.08'	220.00'	16° 41' 18"	63.85'	N 10° 21' 56" W
17	54.95'	50.00'	62° 57' 52"	52.22'	N 29° 27' 39" E
18	254.43'	60.00'	242° 57' 50"	102.34'	N 60° 32' 21" W
19	87.25'	280.00'	17° 51' 12"	88.90'	N 80° 13' 03" E
20	68.55'	220.00'	17° 51' 12"	68.27'	N 80° 13' 03" E



1. ALL DIMENSIONS ARE GIVEN IN FEET.
2. CURVILINEAR MEASUREMENTS ARE ARC DISTANCES.
3. CONCRETE MONUMENTS HAVE BEEN PLACED AT ALL POINTS MARKED "o".
4. CONCRETE MONUMENTS ARE STEEL BARS ONE-HALF (1/2) INCH IN DIAMETER AND THIRTY SIX (36) INCHES IN LENGTH, ENCASED IN A CONCRETE CYLINDER FOUR (4) INCHES IN DIAMETER, AND THIRTY SIX (36) INCHES IN LENGTH.
5. LOT CORNERS HAVE BEEN MARKED WITH STEEL BARS ONE-HALF (1/2) INCH IN DIAMETER, AND EIGHTEEN (18) INCHES IN LENGTH.
6. (R) INDICATES A RADIAL LINE.
7.  $\perp$  INDICATES A RIGHT ANGLE.
8. BEARINGS FOR THIS SUBDIVISION ARE BASED UPON AN OBSERVATION OF POLARIS DATED DECEMBER 8, 1988.
9.  $\square$  DENOTES FOUND MONUMENT AS DESCRIBED IN ITEM 4 OF THIS LEGEND.
10. USE OF THE WORD "PRIVATE" DOES NOT LIMIT IN ANY WAY THE SCOPE OF THE EASEMENT GRANTED TO THE NAME COUNTY DRAINAGE DISTRICT.



Robert D. Kohn

**Giffels-Webster Engineers Inc.**  
ENGINEERS - SURVEYORS - PLANNERS  
2871 BOND STREET ROCHESTER HILLS MICHIGAN  
(313) 852-3100

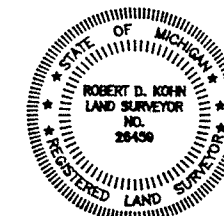
RESTRICTIONS RECORDED 3/7/95 LIBER 15279 PAGES 688-697

A PART OF THE SOUTHWEST 1/4 OF SECTION 30, T-4-N, R-11-E,  
OAKLAND TOWNSHIP, OAKLAND COUNTY, MICHIGAN

LOCATION MAP  
SCALE 1"=2000'

### LEGEND

1. ALL DIMENSIONS ARE GIVEN IN FEET.
2. CURVILINEAR MEASUREMENTS ARE ARC DISTANCES.
3. CONCRETE MONUMENTS HAVE BEEN PLACED AT ALL POINTS MARKED "o".
4. CONCRETE MONUMENTS ARE STEEL BARS ONE-HALF (1/2) INCH IN DIAMETER AND THIRTY SIX (36) INCHES IN LENGTH, ENCASED IN A CONCRETE CYLINDER FOUR (4) INCHES IN DIAMETER, AND THIRTY SIX (36) INCHES IN LENGTH.
5. LOT CORNERS HAVE BEEN MARKED WITH STEEL BARS ONE-HALF (1/2) INCH IN DIAMETER, AND EIGHTEEN (18) INCHES IN LENGTH.
6. (R) INDICATES A RADIAL LINE.  
⊥ INDICATES A RIGHT ANGLE.
8. BEARINGS FOR THIS SUBDIVISION ARE BASED UPON AN OBSERVATION OF POLARIS DATED DECEMBER 8, 1988.
9. □ DENOTES FOUND MONUMENT AS DESCRIBED IN ITEM 4 OF THIS LEGEND.
10. USE OF THE WORD "PRIVATE" DOES NOT LIMIT IN ANY WAY THE SCOPE OF THE EASEMENT GRANTED TO THE NAME COUNTY DRAINAGE DISTRICT.



Robert D. Hohn

**Giffels-Webster Engineers Inc**  
ENGINEERS - SURVEYORS - PLANNERS  
2871 BOND STREET ROCHESTER HILLS MICHIGAN  
(313) 852-3100

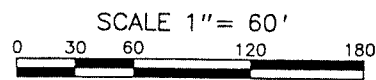
CURVE DATA

CURVE	ARC	RADIUS	CENTRAL ANGLE	CHORD	CHORD BEARING
21	245.69'	480.00'	29° 19' 37"	243.02'	N 23° 39' 33" E
22	254.38'	420.00'	34° 42' 09"	250.51'	N 26° 58' 40" E
23	59.60'	50.00'	68° 17' 57"	56.14'	N 78° 28' 43" E
24	74.89'	50.00'	85° 48' 43"	68.08'	N 04° 35' 01" W
25	167.67'	60.00'	160° 07' 03"	118.20'	N 32° 34' 10" E
26	188.50'	60.00'	180° 00' 00"	120.00'	N 22° 37' 41" E
27	292.86'	280.00'	59° 55' 36"	279.69'	N 49° 16' 31" W
28	277.50'	220.00'	72° 16' 14"	259.46'	N 55° 26' 49" W

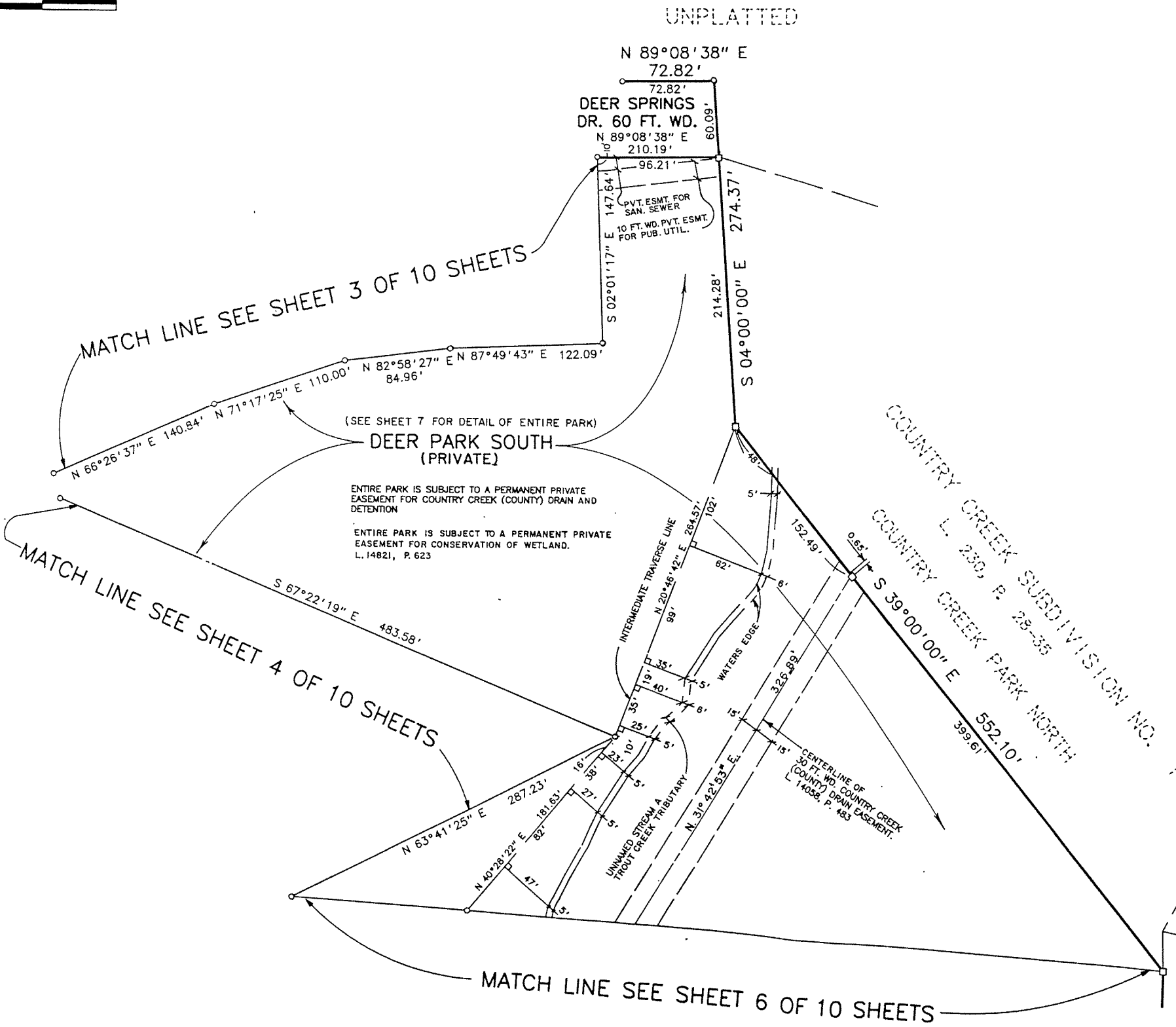
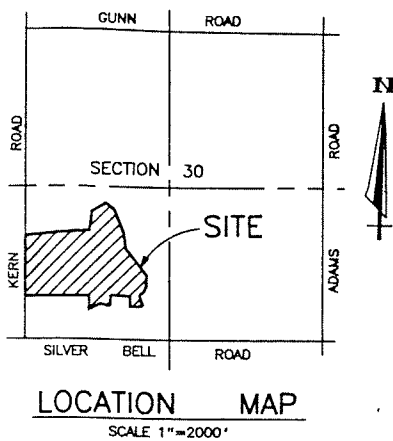
RESTRICTIONS RECORDED 3/7/95 LIBER 15279 PAGES 688-697

# COUNTRY CREEK SUBDIVISION NO. 2

A PART OF THE SOUTHWEST 1/4 OF SECTION 30, T-4-N, R-11-E,  
OAKLAND TOWNSHIP, OAKLAND COUNTY, MICHIGAN

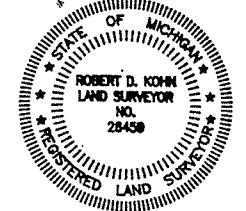


LIBER 238 PAGE 17  
SHEET 5 OF 10 SHEETS



### LEGEND

1. ALL DIMENSIONS ARE GIVEN IN FEET.
2. CURVILINEAR MEASUREMENTS ARE ARC DISTANCES.
3. CONCRETE MONUMENTS HAVE BEEN PLACED AT ALL POINTS MARKED "O".
4. CONCRETE MONUMENTS ARE STEEL BARS ONE-HALF (1/2) INCH IN DIAMETER AND THIRTY SIX (36) INCHES IN LENGTH, ENCASED IN A CONCRETE CYLINDER FOUR (4) INCHES IN DIAMETER, AND THIRTY SIX (36) INCHES IN LENGTH.
5. LOT CORNERS HAVE BEEN MARKED WITH STEEL BARS ONE-HALF (1/2) INCH IN DIAMETER, AND EIGHTEEN (18) INCHES IN LENGTH.
6. (R) INDICATES A RADIAL LINE.
7. L INDICATES A RIGHT ANGLE.
8. BEARINGS FOR THIS SUBDIVISION ARE BASED UPON AN OBSERVATION OF POLARIS DATED DECEMBER 8, 1988.
9. □ DENOTES FOUND MONUMENT AS DESCRIBED IN ITEM 4 OF THIS LEGEND.
10. USE OF THE WORD "PRIVATE" DOES NOT LIMIT IN ANY WAY THE SCOPE OF THE EASEMENT GRANTED TO THE NAME COUNTY DRAINAGE DISTRICT.



*Robert D. Kohn*

**Giffels-Webster Engineers Inc.**  
ENGINEERS - SURVEYORS - PLANNERS  
2871 BOND STREET ROCHESTER HILLS MICHIGAN  
(313) 852-3100

RESTRICTIONS RECORDED 3/7/95 LIBER 15279 Pages 688-697

# COUNTRY CREEK SUBDIVISION NO. 2

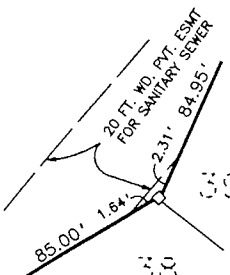
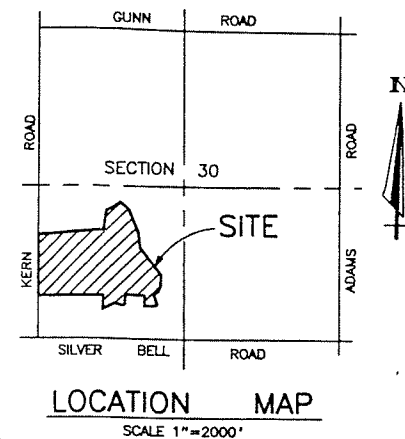
A PART OF THE SOUTHWEST 1/4 OF SECTION 30, T-4-N, R-11-E,  
OAKLAND TOWNSHIP, OAKLAND COUNTY, MICHIGAN

LIBER 238 PAGE 18  
SHEET 6 OF 10 SHEETS

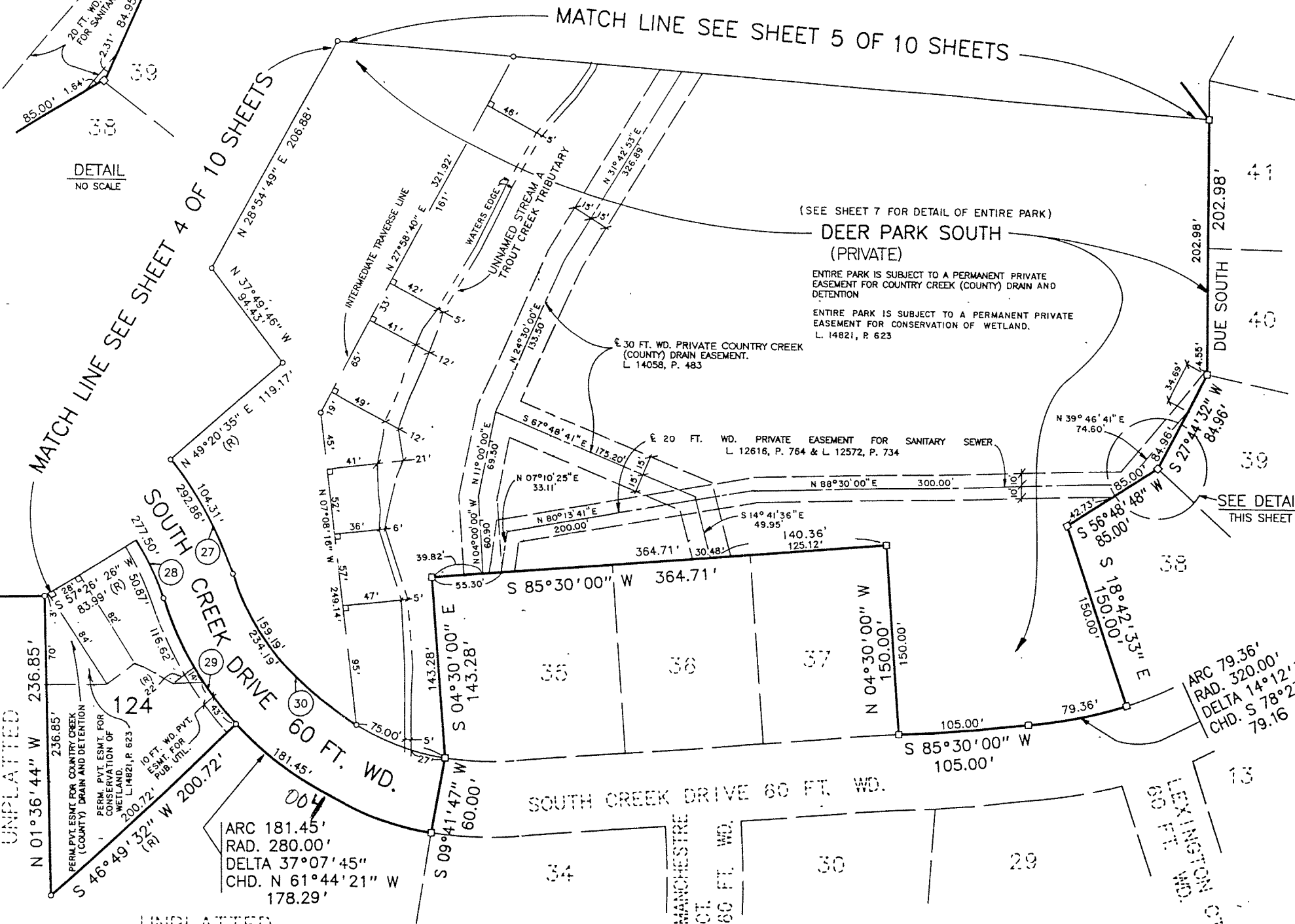
SCALE 1" = 60'

## CURVE DATA

CURVE	ARC	RADIUS	CENTRAL ANGLE	CHORD	CHORD BEARING
27	292.86'	280.00'	59° 55' 36"	279.69'	N 49° 16' 31" W
28	277.50'	220.00'	72° 16' 14"	259.46'	N 55° 26' 49" W
29	116.62'	280.00'	23° 51' 46"	115.78'	N 31° 14' 35" W
30	234.19'	220.00'	60° 59' 32"	223.29'	N 49° 48' 27" W



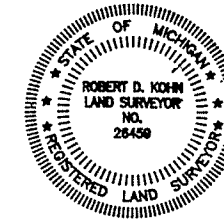
DETAIL  
NO SCALE



COUNTRY CREEK SUBDIVISION NO. 1  
L 230, P 28-35

## LEGEND

1. ALL DIMENSIONS ARE GIVEN IN FEET.
2. CURVILINEAR MEASUREMENTS ARE ARC DISTANCES.
3. CONCRETE MONUMENTS HAVE BEEN PLACED AT ALL POINTS MARKED "O".
4. CONCRETE MONUMENTS ARE STEEL BARS ONE-HALF (1/2) INCH IN DIAMETER AND THIRTY SIX (36) INCHES IN LENGTH, ENCASED IN A CONCRETE CYLINDER FOUR (4) INCHES IN DIAMETER, AND THIRTY SIX (36) INCHES IN LENGTH.
5. LOT CORNERS HAVE BEEN MARKED WITH STEEL BARS ONE-HALF (1/2) INCH IN DIAMETER, AND EIGHTEEN (18) INCHES IN LENGTH.
6. (R) INDICATES A RADIAL LINE.
7. L INDICATES A RIGHT ANGLE.
8. BEARINGS FOR THIS SUBDIVISION ARE BASED UPON AN OBSERVATION OF POLARIS DATED DECEMBER 8, 1988.
9. □ DENOTES FOUND MONUMENT AS DESCRIBED IN ITEM 4 OF THIS LEGEND.
10. USE OF THE WORD "PRIVATE" DOES NOT LIMIT IN ANY WAY THE SCOPE OF THE EASEMENT GRANTED TO THE NAME COUNTY DRAINAGE DISTRICT.



Robert D. Kohn

Giffels-Webster Engineers Inc.  
ENGINEERS - SURVEYORS - PLANNERS  
2871 BOND STREET ROCHESTER HILLS MICHIGAN  
(313) 852-3100

RESTRICTIONS RECORDED 3/1/95 LIBER 15279 PAGES 688-697

COUNTRY CREEK SUBDIVISION NO. 1

L 230 P 28-35



# COUNTRY CREEK SUBDIVISION NO. 2

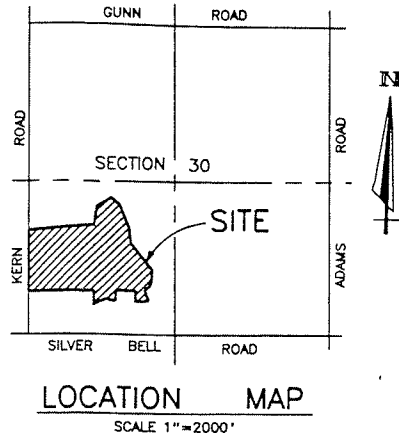
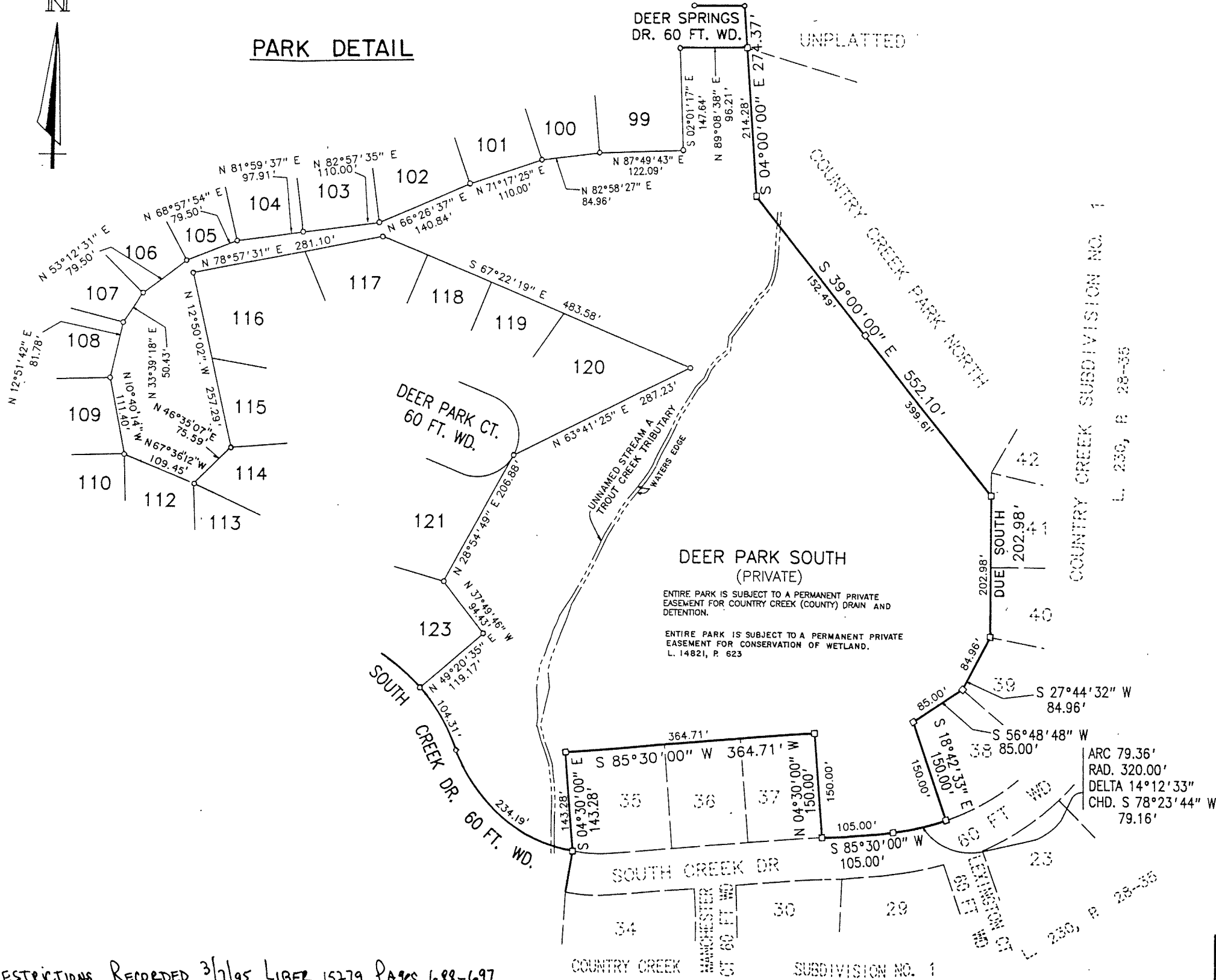
A PART OF THE SOUTHWEST 1/4 OF SECTION 30, T-4-N, R-11-E,  
OAKLAND TOWNSHIP, OAKLAND COUNTY, MICHIGAN

LIBER 238 PAGE 19  
SHEET 7 OF 10 SHEETS

SCALE 1" = 100'

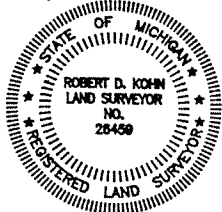


## PARK DETAIL



## LEGEND

1. ALL DIMENSIONS ARE GIVEN IN FEET.
2. CURVILINEAR MEASUREMENTS ARE ARC DISTANCES.
3. CONCRETE MONUMENTS HAVE BEEN PLACED AT ALL POINTS MARKED "o".
4. CONCRETE MONUMENTS ARE STEEL BARS ONE-HALF (1/2) INCH IN DIAMETER AND THIRTY SIX (36) INCHES IN LENGTH, ENCASED IN A CONCRETE CYLINDER FOUR (4) INCHES IN DIAMETER, AND THIRTY SIX (36) INCHES IN LENGTH.
5. LOT CORNERS HAVE BEEN MARKED WITH STEEL BARS ONE-HALF (1/2) INCH IN DIAMETER, AND EIGHTEEN (18) INCHES IN LENGTH.
6. (R) INDICATES A RADIAL LINE.
7. L INDICATES A RIGHT ANGLE.
8. BEARINGS FOR THIS SUBDIVISION ARE BASED UPON AN OBSERVATION OF POLARIS DATED DECEMBER 8, 1988.
9. □ DENOTES FOUND MONUMENT AS DESCRIBED IN ITEM 4 OF THIS LEGEND.
10. USE OF THE WORD "PRIVATE" DOES NOT LIMIT IN ANY WAY THE SCOPE OF THE EASEMENT GRANTED TO THE NAME COUNTY DRAINAGE DISTRICT.



*Robert D. Kohn*

**Giffels-Webster Engineers Inc.**  
ENGINEERS - SURVEYORS - PLANNERS  
2871 BOND STREET ROCHESTER HILLS MICHIGAN  
(313) 852-3100

RESTRICTIONS RECORDED 3/1/95 LIBER 15279 PAGES 688-697

# COUNTRY CREEK SUBDIVISION NO. 2

A PART OF THE SOUTHWEST 1/4 OF SECTION 30, T-4-N, R-11-E,  
OAKLAND TOWNSHIP, OAKLAND COUNTY, MICHIGAN

LIBER 238 PAGE 20  
SHEET 8 OF 10 SHEETS

## SURVEYOR'S CERTIFICATE

I, ROBERT D. KOHN, SURVEYOR, CERTIFY THAT I HAVE SURVEYED, DIVIDED AND MAPPED THE LAND SHOWN ON THIS PLAT, DESCRIBED AS "COUNTRY CREEK SUBDIVISION NO. 2", A PART OF THE SOUTHWEST 1/4 OF SECTION 30, T-4-N., R-11-E., OAKLAND TOWNSHIP, OAKLAND COUNTY, MICHIGAN, MORE PARTICULARLY DESCRIBED AS: COMMENCING AT THE SOUTHWEST CORNER OF SAID SECTION 30; THENCE N. 01° 34' 37" W., 713.95 FEET ALONG THE WEST LINE OF SAID SECTION 30 (KERN ROAD) TO THE POINT OF BEGINNING; THENCE CONTINUING N. 01° 34' 37" W., 1,025.94 FEET ALONG SAID WEST LINE (KERN ROAD); THENCE N. 82° 58' 32" E., 1,163.17 FEET; THENCE N. 02° 00' 41" W., 323.96 FEET; THENCE N. 48° 50' 46" E., 121.14 FEET; THENCE N. 65° 33' 29" E., 146.61 FEET; THENCE S. 48° 59' 20" E., 175.22 FEET; THENCE S. 23° 23' 07" E., 424.81 FEET; THENCE N. 89° 08' 38" E., 72.82 FEET; THENCE S. 04° 00' 00" E., 274.37 FEET IN PART ALONG THE WESTERLY LINE OF COUNTRY CREEK SUBDIVISION NO. 1, AS RECORDED IN LIBER 230 PAGES 28 THROUGH 35 OF PLATS, OAKLAND COUNTY RECORDS; THENCE THE FOLLOWING ELEVEN COURSES ALONG THE PERIMETER OF SAID COUNTRY CREEK SUBDIVISION NO. 1: (1) S. 39° 00' 00" E., 552.10 FEET AND (2) DUE SOUTH 202.98 FEET, AND (3) S. 27° 44' 32" W., 84.96 FEET, AND (4) S. 56° 48' 48" W., 85.00 FEET, AND (5) S. 18° 42' 33" E., 150.00 FEET, AND (6) ALONG A NON-TANGENT CURVE TO THE RIGHT 79.36 FEET, SAID CURVE HAVING A RADIUS OF 320.00 FEET, CENTRAL ANGLE OF 14° 12' 33" AND A LONG CHORD BEARING OF S. 78° 23' 44" W., 79.16 FEET, AND (7) S. 85° 30' 00" W., 105.00 FEET, AND (8) N. 04° 30' 00" W., 150.00 FEET, AND (9) S. 85° 30' 00" W., 364.71 FEET AND (10) S. 04° 30' 00" E., 143.28 FEET, AND (11) S. 09° 41' 47" W., 60.00 FEET; THENCE ALONG A NON-TANGENT CURVE TO THE RIGHT 181.45 FEET, SAID CURVE HAVING A RADIUS OF 280.00 FEET, CENTRAL ANGLE OF 37° 07' 45" AND A LONG CHORD BEARING OF N. 61° 44' 21" W., 178.29 FEET; THENCE S. 46° 49' 32" W., 200.72 FEET; THENCE N. 01° 36' 44" W., 236.85 FEET; THENCE S. 88° 08' 54" W., 1,151.27 FEET TO THE POINT OF BEGINNING AND CONTAINING 53.54 ACRES, AND COMPRISING OF 68 LOTS NUMBERED 66 THROUGH 133, INCLUSIVE AND FIVE PRIVATE PARKS.

THAT I HAVE MADE SUCH SURVEY, LAND DIVISION AND PLAT BY THE DIRECTION OF THE OWNERS OF SUCH LAND.

THAT SUCH PLAT IS A CORRECT REPRESENTATION OF ALL THE EXTERIOR BOUNDARIES OF THE LAND SURVEYED AND THE SUBDIVISION OF IT.

THAT THE REQUIRED MONUMENTS AND LOT MARKERS HAVE BEEN LOCATED IN THE GROUND OR THAT SURETY HAS BEEN DEPOSITED WITH THE MUNICIPALITY, AS REQUIRED BY SECTION 125 OF THE ACT.

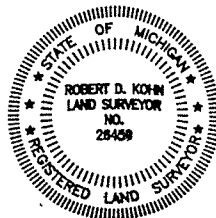
THAT THE ACCURACY OF SURVEY IS WITHIN THE LIMITS REQUIRED BY SECTION 126 OF THE ACT.

THAT THE BEARINGS SHOWN ON THE PLAT ARE EXPRESSED AS REQUIRED BY SECTION 126 (3) OF THE ACT AND AS EXPLAINED IN THE LEGEND.

GIFFELS-WEBSTER ENGINEERS, INC.  
2871 BOND STREET  
ROCHESTER HILLS, MICHIGAN 48309-3515

DATE: June 28, 1994

Robert D. Kohn  
ROBERT D. KOHN, R.L.S. #26459  
VICE PRESIDENT



## PROPRIETOR'S CERTIFICATE

EAGLE CREEK MASTER LIMITED PARTNERSHIP DULY ORGANIZED AND EXISTING UNDER THE LAWS OF THE STATE OF MICHIGAN, BY EAGLE CREEK DEVELOPMENT LIMITED PARTNERSHIP, GENERAL PARTNER AS PROPRIETOR HAS CAUSED THE LAND TO BE SURVEYED, DIVIDED, MAPPED AND DEDICATED AS REPRESENTED ON THIS PLAT AND THAT THE STREETS ARE FOR THE USE OF THE PUBLIC; THAT THE PUBLIC UTILITY EASEMENTS ARE PRIVATE EASEMENTS AND THAT ALL OTHER EASEMENTS ARE FOR THE USES SHOWN ON THE PLAT; THAT SOUTH CREEK PARK, KERN PARK NORTH, KERN PARK SOUTH, DEER PARK AND DEER PARK SOUTH ARE PRIVATE PARKS FOR THE USE OF THE LOT OWNERS OF THIS SUBDIVISION AND FOR FUTURE SUBDIVISIONS OF THE SAME NAME WHERE TITLE IS TRACEABLE TO THIS PROPRIETOR; AND THAT DEER PARK SOUTH EXTENDS TO THE THREAD OF A TROUT CREEK TRIBUTARY AND IS SUBJECT TO THE CORRELATIVE RIGHTS OF OTHER RIPARIAN OWNERS AND THE PUBLIC TRUST IN THESE WATERS.

WITNESSES:

BY:

Tina M. Mulholland  
TINA MULHOLLAND

Jeffrey D. Leonardo  
JEFFREY D. LEONARDO

Laurence R. Goss  
LAURENCE R. GOSS  
VICE PRESIDENT

B-K ADAMS SILVERBELL ASSOCIATES, INC.  
30100 TELEGRAPH ROAD, SUITE 366  
BIRMINGHAM, MICHIGAN 48010  
GENERAL PARTNER OF:

SILVERBELL ADAMS ASSOCIATES  
LIMITED PARTNERSHIP  
30100 TELEGRAPH ROAD, SUITE 366  
BIRMINGHAM, MICHIGAN 48010  
FILE L15-420  
GENERAL PARTNER OF:

EAGLE CREEK DEVELOPMENT  
LIMITED PARTNERSHIP  
30100 TELEGRAPH ROAD, SUITE 366  
BIRMINGHAM, MICHIGAN 48010  
FILE L15-439  
GENERAL PARTNER OF:

EAGLE CREEK MASTER LIMITED PARTNERSHIP  
30100 TELEGRAPH ROAD, SUITE 366  
BIRMINGHAM, MICHIGAN 48010  
FILE L15-473

## ACKNOWLEDGEMENT:

STATE OF MICHIGAN)

)S.S.

COUNTY OF MACOMB)

PERSONALLY CAME BEFORE ME THIS 30th DAY OF June, 1994, LAURENCE R. GOSS, VICE PRESIDENT OF B-K ADAMS SILVERBELL ASSOCIATES, INC., GENERAL PARTNER OF SILVERBELL ADAMS ASSOCIATES LIMITED PARTNERSHIP, GENERAL PARTNER OF EAGLE CREEK DEVELOPMENT LIMITED PARTNERSHIP, GENERAL PARTNER OF EAGLE CREEK MASTER LIMITED PARTNERSHIP, TO ME KNOWN TO BE THE PERSON WHO EXECUTED THE FOREGOING INSTRUMENT, AND TO ME KNOWN TO BE SUCH PARTNER, AND ACKNOWLEDGED THAT HE EXECUTED THE FOREGOING INSTRUMENT AS SUCH PARTNER AS THE FREE ACT AND DEED OF SAID LIMITED PARTNERSHIP.

MY COMMISSION EXPIRES: 10/11/97

Barbara M. Hollins  
Barbara Hollins  
Notary Public  
Macomb County, Michigan  
Acting in Oakland County,  
Michigan

## PROPRIETOR'S CERTIFICATE

PULTE HOMES OF MICHIGAN CORPORATION, A CORPORATION DULY ORGANIZED AND EXISTING UNDER THE LAWS OF THE STATE OF MICHIGAN, BY ROBERT J. HALSO, PRESIDENT, AS PROPRIETOR HAS CAUSED THE LAND TO BE SURVEYED, DIVIDED, MAPPED AND DEDICATED AS REPRESENTED ON THIS PLAT AND THAT THE STREETS ARE FOR THE USE OF THE PUBLIC; THAT THE PUBLIC UTILITY EASEMENTS ARE PRIVATE EASEMENTS AND THAT ALL OTHER EASEMENTS ARE FOR THE USES SHOWN ON THE PLAT; THAT SOUTH CREEK PARK, KERN PARK NORTH, KERN PARK SOUTH, DEER PARK AND DEER PARK SOUTH ARE PRIVATE PARKS FOR THE USE OF THE LOT OWNERS OF THIS SUBDIVISION AND FOR FUTURE SUBDIVISIONS OF THE SAME NAME WHERE TITLE IS TRACEABLE TO THIS PROPRIETOR; AND THAT DEER PARK SOUTH EXTENDS TO THE THREAD OF A TROUT CREEK TRIBUTARY AND IS SUBJECT TO THE CORRELATIVE RIGHTS OF OTHER RIPARIAN OWNERS AND THE PUBLIC TRUST IN THESE WATERS.

WITNESSES:

BY:

PULTE HOMES OF MICHIGAN CORPORATION  
33 BLOOMFIELD HILLS PARKWAY  
SUITE 220  
BLOOMFIELD HILLS, MICHIGAN 48013

Vincent P. De Porre  
VINCENT P. DE PORRE

John G. De Porre  
JOHN G. DE PORRE

BY:

Robert J. Halso  
ROBERT J. HALSO  
PRESIDENT

## ACKNOWLEDGEMENT:

STATE OF MICHIGAN)

)S.S.

COUNTY OF MACOMB)

PERSONALLY CAME BEFORE ME THIS 5th DAY OF July, 1994, ROBERT J. HALSO, PRESIDENT OF THE ABOVE NAMED CORPORATION, TO ME KNOWN TO BE THE PERSON WHO EXECUTED THE FOREGOING INSTRUMENT, AND TO ME KNOWN TO BE SUCH PRESIDENT OF SAID CORPORATION, AND ACKNOWLEDGED THAT HE EXECUTED THE FOREGOING INSTRUMENT AS SUCH OFFICER AS HIS FREE ACT AND DEED OF SAID CORPORATION BY ITS AUTHORITY.

MY COMMISSION EXPIRES: 9/1/94

Rhonda L. Bobean  
Rhonda L. Bobean  
Notary Public  
Macomb County, Michigan  
Acting in Oakland County,  
Michigan

Giffels-Webster Engineers Inc.

ENGINEERS - SURVEYORS - PLANNERS  
2871 BOND STREET ROCHESTER HILLS MICHIGAN  
(313) 852-3100



# COUNTRY CREEK SUBDIVISION NO. 2

A PART OF THE SOUTHWEST 1/4 OF SECTION 30, T-4-N, R-11-E,  
OAKLAND TOWNSHIP, OAKLAND COUNTY, MICHIGAN

LIBER 238 PAGE 2/  
SHEET 9 OF 10 SHEETS

## PROPRIETOR'S CERTIFICATE

COMERICA BANK, A CORPORATION DULY ORGANIZED AND EXISTING UNDER THE LAWS OF THE STATE OF MICHIGAN, BY W. TODD GLENN, ACCOUNT OFFICER, AS PROPRIETOR HAS CAUSED THE LAND TO BE SURVEYED, DIVIDED, MAPPED AND DEDICATED AS REPRESENTED ON THIS PLAT AND THAT THE STREETS ARE FOR THE USE OF THE PUBLIC; THAT THE PUBLIC UTILITY EASEMENTS ARE PRIVATE EASEMENTS AND THAT ALL OTHER EASEMENTS ARE FOR THE USES SHOWN ON THE PLAT; THAT SOUTH CREEK PARK, KERN PARK NORTH, KERN PARK SOUTH, DEER PARK AND DEER PARK SOUTH ARE PRIVATE PARKS FOR THE USE OF THE LOT OWNERS OF THIS SUBDIVISION AND FOR FUTURE SUBDIVISIONS OF THE SAME NAME WHERE TITLE IS TRACEABLE TO THIS PROPRIETOR; AND THAT DEER PARK SOUTH EXTENDS TO THE THREAD OF A TROUT CREEK TRIBUTARY AND IS SUBJECT TO THE CORRELATIVE RIGHTS OF OTHER RIPARIAN OWNERS AND THE PUBLIC TRUST IN THESE WATERS.

WITNESSES:

BY:

COMERICA BANK  
29201 TELEGRAPH ROAD  
SOUTHFIELD, MICHIGAN  
SUCCESSOR BY MERGER TO  
MANUFACTURERS NATIONAL BANK

Tina M. Mulholland  
TINA M. MULHOLLAND

Steven J. Enclhart  
STEVEN J. ENCLHART

BY:

W. TODD GLENN  
ACCOUNT OFFICER

## ACKNOWLEDGEMENT:

STATE OF MICHIGAN)  
) S.S.  
COUNTY OF OAKLAND)

PERSONALLY CAME BEFORE ME THIS 8th DAY OF July, 1994, W. TODD GLENN, ACCOUNT OFFICER OF THE ABOVE NAMED CORPORATION, TO ME KNOWN TO BE THE PERSON WHO EXECUTED THE FOREGOING INSTRUMENT, AND TO ME KNOWN TO BE SUCH ACCOUNT OFFICER OF SAID CORPORATION, AND ACKNOWLEDGED THAT HE EXECUTED THE FOREGOING INSTRUMENT AS SUCH OFFICER AS HIS FREE ACT AND DEED OF SAID CORPORATION BY ITS AUTHORITY.

MY COMMISSION EXPIRES: 10/11/97

Barbara M. Hollins  
BARBARA M. HOLLINS  
Notary Public  
Oakland County, Michigan

Macomb  
Acting in Oakland County, MI

## PROPRIETOR'S CERTIFICATE

I, AS PROPRIETOR, CERTIFY THAT I CAUSED THE LAND TO BE SURVEYED, DIVIDED, MAPPED AND DEDICATED AS REPRESENTED ON THIS PLAT AND THAT THE STREETS ARE FOR THE USE OF THE PUBLIC; THAT THE PUBLIC UTILITY EASEMENTS ARE PRIVATE EASEMENTS AND THAT ALL OTHER EASEMENTS ARE FOR THE USES SHOWN ON THE PLAT; THAT SOUTH CREEK PARK, KERN PARK NORTH, KERN PARK SOUTH, DEER PARK AND DEER PARK SOUTH ARE PRIVATE PARKS FOR THE USE OF THE LOT OWNERS OF THIS SUBDIVISION AND FOR FUTURE SUBDIVISIONS OF THE SAME NAME WHERE TITLE IS TRACEABLE TO THIS PROPRIETOR; AND THAT DEER PARK SOUTH EXTENDS TO THE THREAD OF A TROUT CREEK TRIBUTARY AND IS SUBJECT TO THE CORRELATIVE RIGHTS OF OTHER RIPARIAN OWNERS AND THE PUBLIC TRUST IN THESE WATERS.

WITNESSES:

Mark A. Young  
Daniel A. Gilbert  
DANIEL A. GILBERT

John M. Williams  
JOHN M. WILLIAMS  
3513 BARTON FARMS DRIVE  
ANN ARBOR, MICHIGAN 48105

## ACKNOWLEDGEMENT:

STATE OF MICHIGAN)  
) S.S.  
COUNTY OF WASHTENAW)

PERSONALLY CAME BEFORE ME THIS 21st DAY OF July, 1994, JOHN M. WILLIAMS, A MARRIED MAN, TO ME KNOWN TO BE THE PERSON WHO EXECUTED THE FOREGOING INSTRUMENT, AND ACKNOWLEDGED THAT HE EXECUTED THE SAME AS HIS FREE ACT AND DEED.

MY COMMISSION EXPIRES: 6/21/97

Jacqueline M. Kulinski  
JACQUELINE M. KULINSKI  
Notary Public  
Oakland County, Michigan  
Wayne  
Acting in Washtenaw County

## PROPRIETOR'S CERTIFICATE

I, AS PROPRIETOR, CERTIFY THAT I CAUSED THE LAND TO BE SURVEYED, DIVIDED, MAPPED AND DEDICATED AS REPRESENTED ON THIS PLAT AND THAT THE STREETS ARE FOR THE USE OF THE PUBLIC; THAT THE PUBLIC UTILITY EASEMENTS ARE PRIVATE EASEMENTS AND THAT ALL OTHER EASEMENTS ARE FOR THE USES SHOWN ON THE PLAT; THAT SOUTH CREEK PARK, KERN PARK NORTH, KERN PARK SOUTH, DEER PARK AND DEER PARK SOUTH ARE PRIVATE PARKS FOR THE USE OF THE LOT OWNERS OF THIS SUBDIVISION AND FOR FUTURE SUBDIVISIONS OF THE SAME NAME WHERE TITLE IS TRACEABLE TO THIS PROPRIETOR; AND THAT DEER PARK SOUTH EXTENDS TO THE THREAD OF A TROUT CREEK TRIBUTARY AND IS SUBJECT TO THE CORRELATIVE RIGHTS OF OTHER RIPARIAN OWNERS AND THE PUBLIC TRUST IN THESE WATERS.

WITNESSES:

Mark A. Young  
Mark A. Young  
Daniel A. Gilbert  
DANIEL A. GILBERT

Janette F. Williams  
JANETTE F. WILLIAMS  
3513 BARTON FARMS DRIVE  
ANN ARBOR, MICHIGAN 48105

## ACKNOWLEDGEMENT:

STATE OF MICHIGAN)  
) S.S.  
COUNTY OF WASHTENAW)

PERSONALLY CAME BEFORE ME THIS 21st DAY OF July, 1994, JANETTE F. WILLIAMS, TO ME KNOWN TO BE THE PERSON WHO EXECUTED THE FOREGOING INSTRUMENT, AND ACKNOWLEDGED THAT SHE EXECUTED THE SAME AS HER FREE ACT AND DEED.

MY COMMISSION EXPIRES: 6/21/97

Jacqueline M. Kulinski  
JACQUELINE M. KULINSKI  
Notary Public  
Oakland County, Michigan  
Wayne  
Acting in Washtenaw County

## PROPRIETOR'S CERTIFICATE

WE, AS PROPRIETORS, CERTIFY THAT WE HAVE CAUSED THE LAND TO BE SURVEYED, DIVIDED, MAPPED AND DEDICATED AS REPRESENTED ON THIS PLAT AND THAT THE STREETS ARE FOR THE USE OF THE PUBLIC; THAT THE PUBLIC UTILITY EASEMENTS ARE PRIVATE EASEMENTS AND THAT ALL OTHER EASEMENTS ARE FOR THE USES SHOWN ON THE PLAT; THAT SOUTH CREEK PARK, KERN PARK NORTH, KERN PARK SOUTH, DEER PARK AND DEER PARK SOUTH ARE PRIVATE PARKS FOR THE USE OF THE LOT OWNERS OF THIS SUBDIVISION AND FOR FUTURE SUBDIVISIONS OF THE SAME NAME WHERE TITLE IS TRACEABLE TO THIS PROPRIETOR; AND THAT DEER PARK SOUTH EXTENDS TO THE THREAD OF A TROUT CREEK TRIBUTARY AND IS SUBJECT TO THE CORRELATIVE RIGHTS OF OTHER RIPARIAN OWNERS AND THE PUBLIC TRUST IN THESE WATERS.

WITNESSES:

Mark A. Young  
Mark A. Young

Michael J. Ferrantino, Jr.  
MICHAEL J. FERRANTINO, JR.  
1349 S. HURON  
YPSILANTI, MICHIGAN 48197

Daniel A. Gilbert  
DANIEL A. GILBERT

Kellie S. Ferrantino  
KELLIE S. FERRANTINO  
1349 S. HURON  
YPSILANTI, MICHIGAN 48197

## ACKNOWLEDGEMENT:

STATE OF MICHIGAN)  
) S.S.  
COUNTY OF WASHTENAW)

PERSONALLY CAME BEFORE ME THIS 21st DAY OF July, 1994, MICHAEL J. FERRANTINO, JR. AND KELLIE S. FERRANTINO, HIS WIFE, TO ME KNOWN TO BE THE PERSONS WHO EXECUTED THE FOREGOING INSTRUMENT, AND ACKNOWLEDGED THAT THEY EXECUTED THE SAME AS THEIR FREE ACT AND DEED.

MY COMMISSION EXPIRES: 6/27/97

Jacqueline M. Kulinski  
JACQUELINE M. KULINSKI  
Notary Public  
Oakland County, Michigan  
Wayne  
Acting in Washtenaw County



Robert D. Kohn

Giffels-Webster Engineers Inc.  
ENGINEERS - SURVEYORS - PLANNERS  
2871 BOND STREET ROCHESTER HILLS MICHIGAN  
(313) 852-3100

# COUNTRY CREEK SUBDIVISION NO. 2

A PART OF THE SOUTHWEST 1/4 OF SECTION 30, T-4-N, R-11-E,  
OAKLAND TOWNSHIP, OAKLAND COUNTY, MICHIGAN

LIBER 238 PAGE 22  
SHEET 10 OF 10 SHEETS

## PROPRIETOR'S CERTIFICATE

I, NANCY F. YOUNG, AS PROPRIETOR, CERTIFY THAT I CAUSED THE LAND TO BE SURVEYED, DIVIDED, MAPPED AND DEDICATED AS REPRESENTED ON THIS PLAT AND THAT THE STREETS ARE FOR THE USE OF THE PUBLIC; THAT THE PUBLIC UTILITY EASEMENTS ARE PRIVATE EASEMENTS AND THAT ALL OTHER EASEMENTS ARE FOR THE USES SHOWN ON THE PLAT; THAT SOUTH CREEK PARK, KERN PARK NORTH, KERN PARK SOUTH, DEER PARK AND DEER PARK SOUTH ARE PRIVATE PARKS FOR THE USE OF THE LOT OWNERS OF THIS SUBDIVISION AND FOR FUTURE SUBDIVISIONS OF THE SAME NAME WHERE TITLE IS TRACEABLE TO THIS PROPRIETOR; AND THAT DEER PARK SOUTH EXTENDS TO THE THREAD OF A TROUT CREEK TRIBUTARY AND IS SUBJECT TO THE CORRELATIVE RIGHTS OF OTHER RIPARIAN OWNERS AND THE PUBLIC TRUST IN THESE WATERS.

## WITNESSES:

Mark A. Young  
Mark A. Young  
Daniel A. Gilbert  
DANIEL A. GILBERT  
Nancy F. Young  
NANCY F. YOUNG  
3125 W. DOBSON  
ANN ARBOR, MICHIGAN 48105

## ACKNOWLEDGEMENT:

STATE OF MICHIGAN )  
 ) S.S.  
COUNTY OF OAKLAND )

PERSONALLY CAME BEFORE ME THIS 21st DAY OF July, 1994, NANCY F. YOUNG, TO ME KNOWN TO BE THE PERSON WHO EXECUTED THE FOREGOING INSTRUMENT, AND ACKNOWLEDGED THAT SHE EXECUTED THE SAME AS HER FREE ACT AND DEED.

MY COMMISSION EXPIRES: 6/2/97 Jaqueline M. Kulwicki  
Notary Public  
Oakland County, Michigan  
Wayne  
Acting in Westernau County

## COUNTY TREASURER'S CERTIFICATE:

THE RECORDS IN MY OFFICE SHOW NO UNPAID TAXES OR SPECIAL ASSESSMENTS FOR THE FIVE YEARS PRECEDING July 27, 1994 INVOLVING THE LANDS INCLUDED IN THIS PLAT.

C. Hugh Dohany  
C. HUGH DOHANY  
OAKLAND COUNTY TREASURER

## COUNTY DRAIN COMMISSIONER'S CERTIFICATE:

APPROVED ON September 26, 1994 AS COMPLYING WITH SECTION 192, OF ACT 288, P.A. 1967, AND THE APPLICABLE RULES AND REGULATIONS PUBLISHED BY MY OFFICE IN THE COUNTY OF OAKLAND.

George W. Kuhn  
GEORGE W. KUHN  
OAKLAND COUNTY DRAIN COMMISSIONER

## COUNTY ROAD COMMISSION CERTIFICATE:

APPROVED ON NOVEMBER 16, 1994 AS COMPLYING WITH SECTION 183, OF ACT 288, P.A. 1967, AND THE APPLICABLE PUBLISHED RULES AND REGULATIONS OF THE BOARD OF ROAD COMMISSIONERS OF THE COUNTY OF OAKLAND.

Rudy D. Lozano  
RUDY D. LOZANO  
CHAIRMAN  
John E. Olsen  
JOHN E. OLSEN  
VICE CHAIRMAN  
Richard V. Vogt  
RICHARD V. VOGT  
COMMISSIONER

## CERTIFICATE OF MUNICIPAL APPROVAL:

I CERTIFY THAT THIS PLAT WAS APPROVED BY THE TOWNSHIP BOARD OF OAKLAND AT A MEETING HELD ON December 13, 1994, AND WAS REVIEWED AND FOUND TO BE IN COMPLIANCE WITH ACT 288, P.A. 1967, ALSO ADEQUATE SURETY HAS BEEN DEPOSITED WITH THE CLERK FOR THE PLACING OF MONUMENTS AND LOT MARKERS WITHIN A REASONABLE LENGTH OF TIME, NOT TO EXCEED ONE YEAR FROM THE ABOVE DATE, AND THAT SURETY HAS BEEN POSTED TO INSURE THE INSTALLATION OF PUBLIC SEWER AND PUBLIC WATER SERVICES.

Carolyn L. Phelps  
CAROLYN L. PHELPS, CLERK

## COUNTY PLAT BOARD CERTIFICATE:

THIS PLAT HAS BEEN REVIEWED AND IS APPROVED BY THE OAKLAND COUNTY PLAT BOARD ON JANUARY 27, 1995, AS BEING IN COMPLIANCE WITH ALL OF THE PROVISIONS OF ACT 288, P.A. 1967; AND THE PLAT BOARD'S APPLICABLE RULES AND REGULATIONS.

Larry P. Crake  
LARRY P. CRAKE  
CHAIRMAN OF THE BOARD OF COMMISSIONERS

C. Hugh Dohany  
C. HUGH DOHANY  
COUNTY TREASURER

Thomas M. Smith  
THOMAS M. SMITH, L.L.S.  
COUNTY PLAT ENGINEER

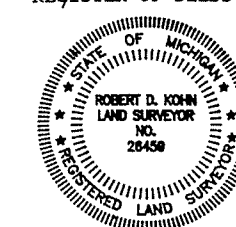
Lynn D. Allen  
LYNN D. ALLEN, COUNTY CLERK  
REGISTER OF DEEDS

## RECORDING CERTIFICATE:

STATE OF MICHIGAN )  
 ) S.S.  
OAKLAND COUNTY )

THIS PLAT WAS RECEIVED FOR RECORD ON THE 7th DAY OF MARCH, 1995, A.D., AT 8:50 AM AND RECORDED IN LIBER 238 OF PLATS, ON PAGES 13, 14, 15, 16, 17, 18, 19, 20, 21 & 22.

Lynn D. Allen  
LYNN D. ALLEN, COUNTY CLERK  
REGISTER OF DEEDS



Robert D. Kohn

Giffels-Webster Engineers Inc.  
ENGINEERS - SURVEYORS - PLANNERS  
2871 BOND STREET ROCHESTER HILLS MICHIGAN  
(313) 852-3100